



3651 N Highway 89 • Chino Valley, AZ 86323  
(928) 636-7080 • www.p-a-g.net

# TOYOTA TACOMA W/ O.E. TRAILER HITCH REAR BUMPER LIFT KIT INSTALLATION INSTRUCTIONS 2005-2015 **KIT# 5903\***

**\*FOR USE WITH PA KIT# 5603 & VEHICLES  
EQUIPPED WITH O.E. TRAILER HITCH ONLY**

## **⚠ WARNING**

Installation of a Performance Automotive Group body lift kit will change the vehicle's center of gravity and handling characteristics both on- and off-road. You must drive the vehicle safely! Extreme care must be taken to prevent vehicle rollover or loss of control, which could result in serious injury or death. Avoid sudden sharp turns or abrupt maneuvers and always make sure all vehicle occupants have their seat belts fastened.

## **⚠ WARNING**

Before you install this kit, read and understand all instructions, warnings, cautions, and notes in this instruction sheet and in the vehicle owner's manual.

## **⚠ CAUTION**

Proper installation of this kit requires knowledge of the factory recommended procedures for removal and installation of original equipment components. We recommend that the factory shop manual and any special tools needed to service your vehicle be on hand during the installation. Installation of this kit without proper knowledge of the factory recommended procedures may affect the performance of these components and the safety of the vehicle. We strongly recommend that a certified mechanic familiar with the installation of similar components install this kit.

## **⚠ WARNING**

DO NOT combine suspension, body, or other lift devices. Use of vehicle with combined lifts may result in unsafe and/or unexpected handling characteristics.

## **⚠ WARNING**

This kit should only be installed on a vehicle that is in good working condition. Before you install the kit, thoroughly inspect the vehicle for corrosion or deformation of the sheet metal around the factory body mounts. If the vehicle is suspected to have been in a collision or misused, do not install this kit. Off-road use of your vehicle with this kit installed may increase the stress applied to the factory body mounts. We do not recommend that any vehicle with a body lift kit installed be involved in any extreme off-road maneuvers such as jumping. Failure to observe this warning may result in serious personal injury and/or severe damage to your vehicle.

## **⚠ WARNING**

Many states and municipalities have laws restricting bumper heights and vehicle lifts. Consult state and local laws to determine if the changes you intend to make to the vehicle comply with the law.

## **⚠ WARNING**

The installation of larger tires may reduce the effectiveness of the braking system.

## **⚠ WARNING**

Always wear eye protection when operating power tools.

## **⚠ WARNING**

Before you install this kit, block the vehicle tires to prevent the vehicle from rolling.

## **NOTE**

Performance Automotive Group recommends using the Loctite® supplied in the kit on the threads of all kit nuts and bolts unless specified otherwise in these instructions.

# Before Starting Installation

**NOTE**  
Kit parts are prefaced by the word *kit* and appear in **bold** print.

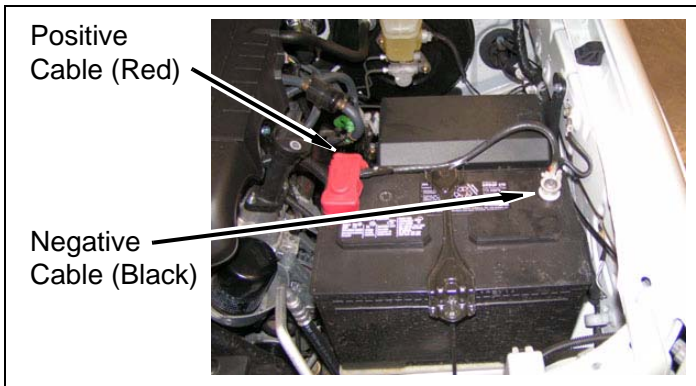
1. Carefully read all warnings and instructions completely before beginning.
2. Verify all parts have been received in this kit by checking the parts list at the end of this document.

**NOTE**  
If parts are missing from kit, please be prepared to provide the following information:  
1. **Name** of purchase location  
2. **Bar Code** on side of box  
3. **Date** above bar code  
4. **Date** inside box cover  
5. **Inspector #** from inside box cover

3. **Only install this kit on the vehicle for which it is specified.** If anytime during the installation you encounter something different from what is outlined in the instructions, call technical support at (928) 636-7080.
4. Special tools needed:
  - a. Die grinder with cutting wheel or similar tool capable of cutting metal.
5. Park vehicle on a clean, dry, flat, level surface and block tires so vehicle cannot roll in either direction.

## Engine Compartment

1. Disconnect both battery cables. Disconnect negative cable first, then positive cable.

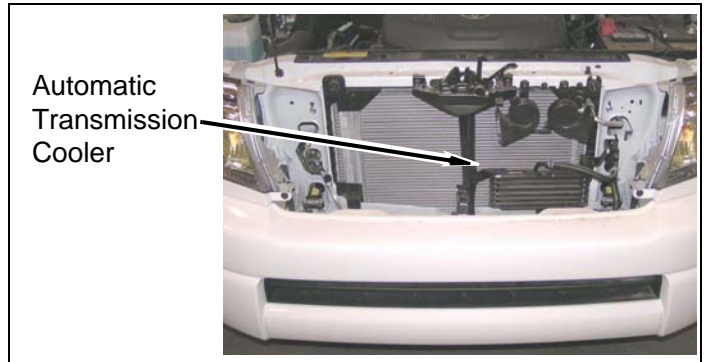


# Prepare to Install Kit

## Front of Vehicle

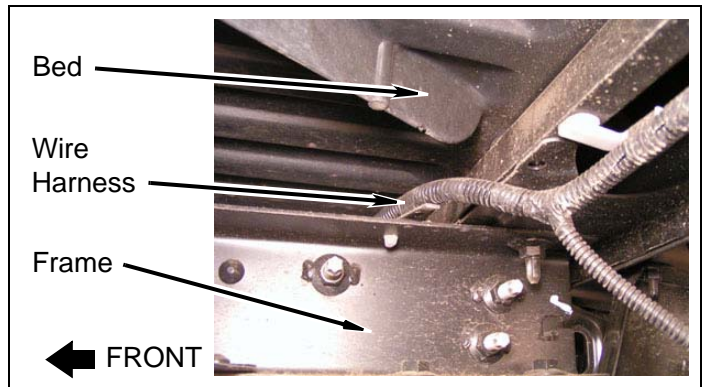
1. **Automatic Transmission Cooler:** (if equipped)

**NOTE**  
Refer to 5603 body lift instructions if vehicle is equipped with a factory automatic transmission cooler.

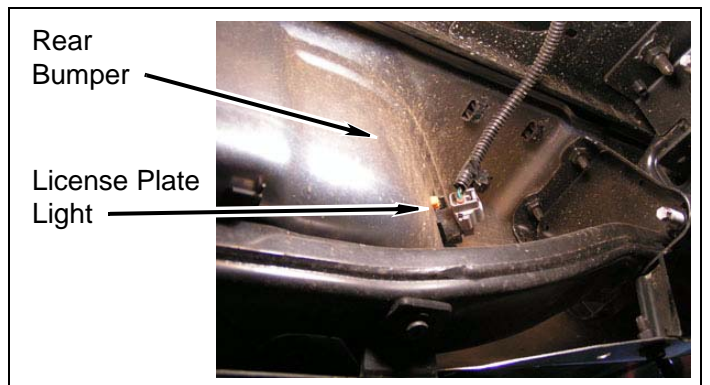


## Rear of Vehicle

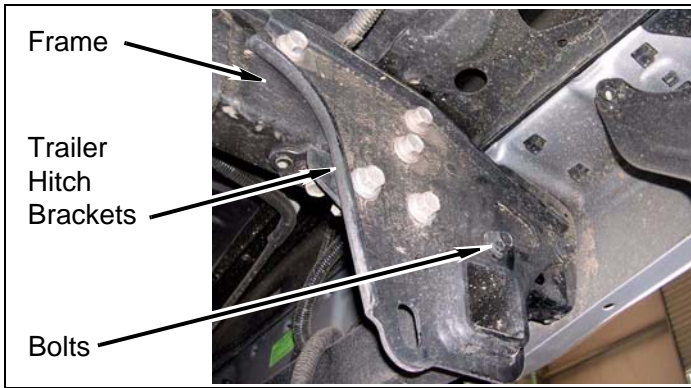
1. Rear bumper
  - a. Remove rear bumper wire harness from driver and passenger frame.



- b. Remove two license plate lights from rear bumper.



- c. Remove four bolts and rear bumper from O.E. trailer hitch brackets.



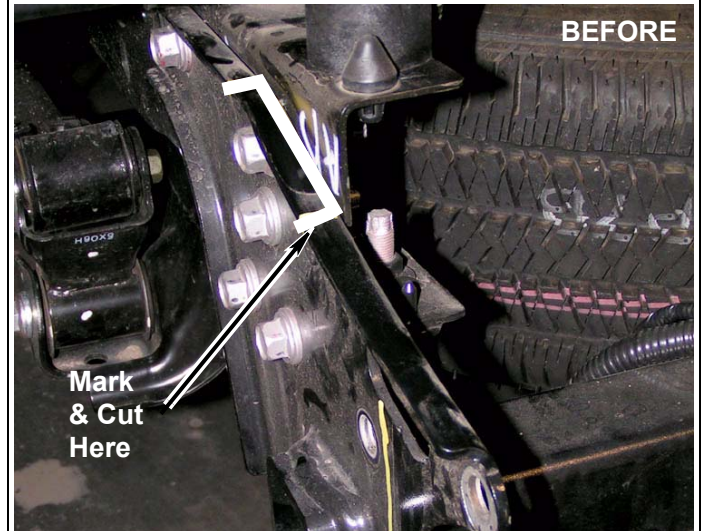
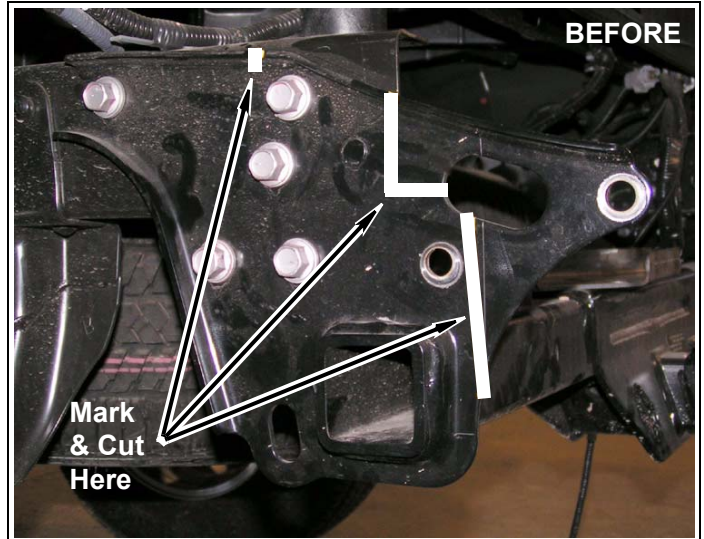
**⚠ WARNING**

The following procedure is intended only to enhance the appearance of the vehicle. The **rear bumper** will no longer be rated for towing of any kind. Towing with the rear bumper after it has been lifted can result in death, serious personal injury, or damage to the vehicle. Towing after the bumper has been lifted should be accomplished using a rated Class III receiver type hitch or the O.E. trailer hitch.

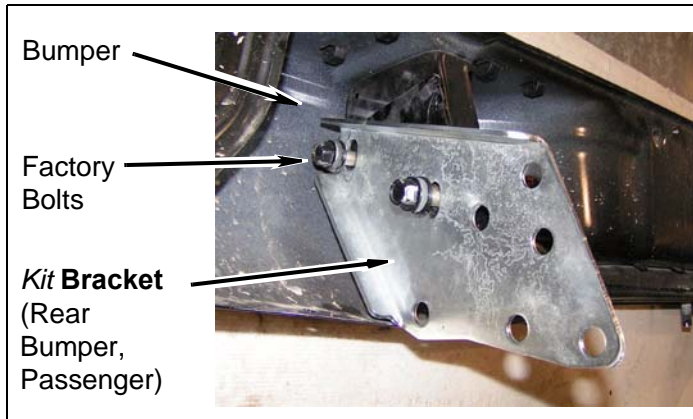
## Install Kit

### 1. Rear bumper

- a. Mark and cut driver and passenger O.E. trailer hitch brackets along white lines as shown below.

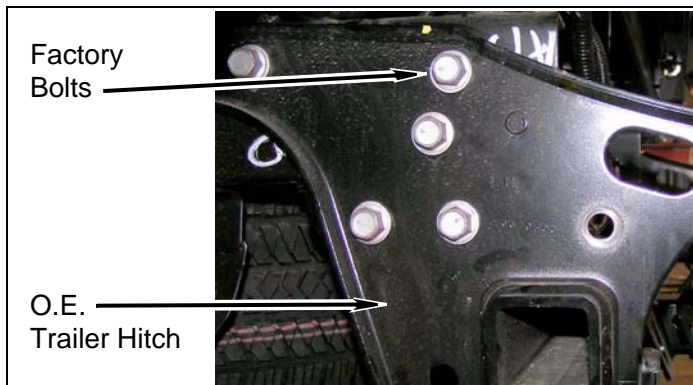


- b. Apply a small amount of *kit* **Loctite**® onto threads of two factory bolts and install *kit* **bracket** (rear bumper, passenger) onto passenger side bumper with two factory bolts. DO NOT TIGHTEN.

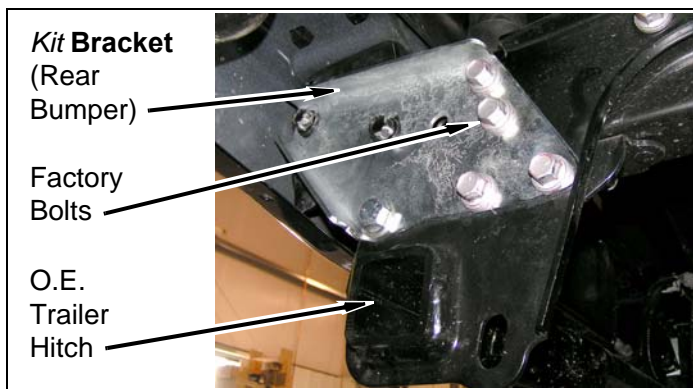


- c. Repeat above step for driver side.

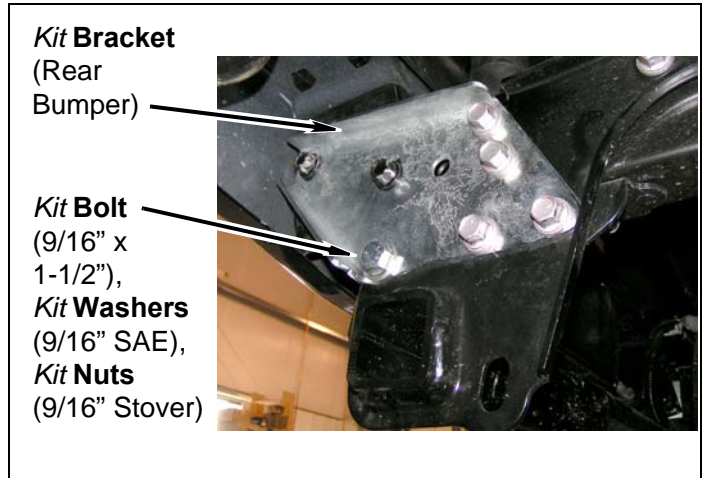
- d. Remove eight factory bolts from O.E. trailer hitch and frame rails.



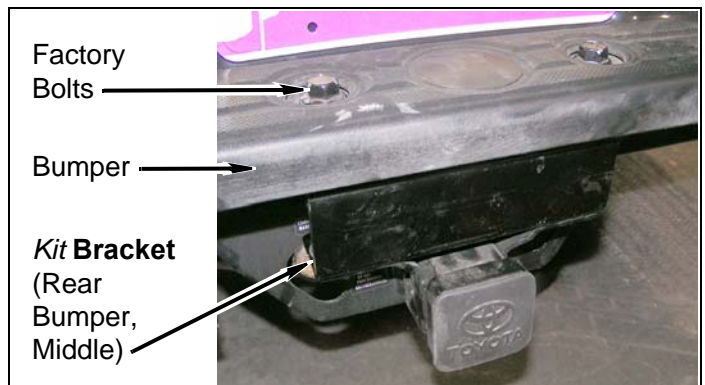
- e. Apply a small amount of *kit* **Loctite**® onto threads of eight factory bolts and install rear bumper and *kit* **brackets** (rear bumper) onto O.E. trailer hitch with eight factory bolts. DO NOT TIGHTEN.



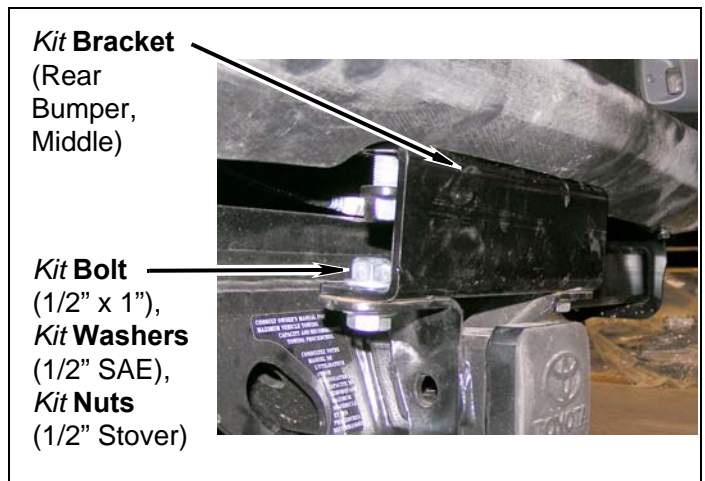
- f. Install two *kit* **brackets** (rear bumper) onto O.E. trailer hitch with two *kit* **bolts** (9/16" x 1-1/2"), four *kit* **washers** (9/16" SAE), and two *kit* **nuts** (9/16" stover). DO NOT TIGHTEN.



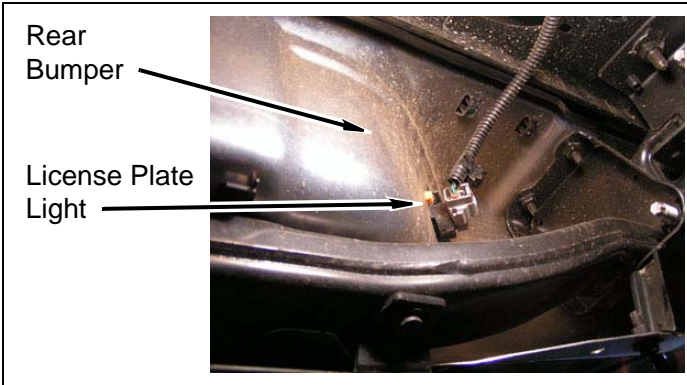
- g. Install *kit* **bracket** (rear bumper, middle) onto rear bumper with two factory bolts and nuts. DO NOT TIGHTEN.



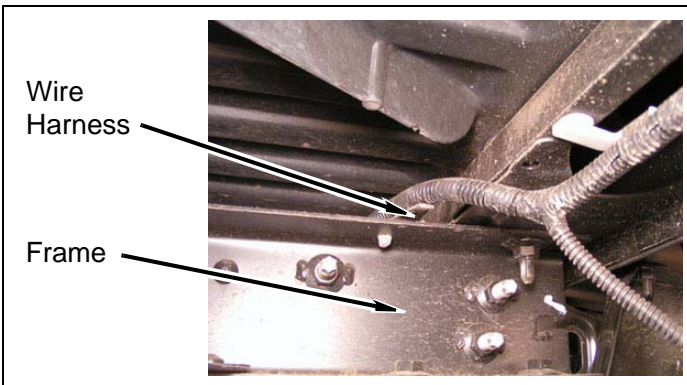
- h. Install *kit* **bracket** (rear bumper, middle) onto O.E. trailer hitch with two *kit* **bolts** (1/2" x 1"), four *kit* **washers** (1/2" SAE), and two *kit* **nuts** (1/2" stover). DO NOT TIGHTEN.



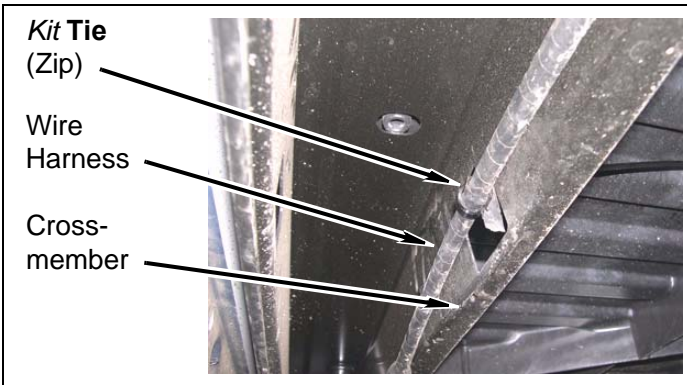
- i. Install license plate lights onto rear bumper.



- j. Install rear bumper wiring harness onto frame, if possible.



- k. Install *kit tie* (zip) onto rear crossmember and bumper wiring harness.

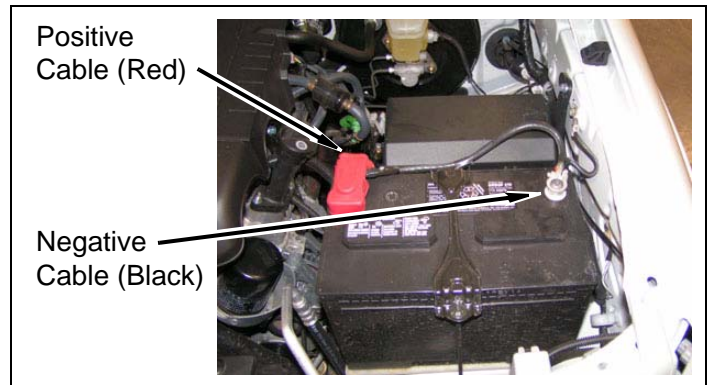


- l. Adjust bumper to previously recorded measurements (during kit# 5603 installation) and TIGHTEN all hardware.

## After Completing Installation

### Engine Compartment

1. Connect both battery cables. Connect positive cable first, then negative cable.



### Miscellaneous

1. Check all fasteners to ensure they are tight.
2. Ensure all wires, hoses, cables, etc. are properly connected and there is ample slack.

#### **⚠WARNING**

Retorque all fasteners after 500 miles and after off road use. All body lift components should be visually inspected and fasteners retorqued during routine vehicle servicing.

#### **⚠CAUTION**

Performance Automotive Group does not recommend any particular wheel and tire combinations for use with its body lifts and cannot assume responsibility for the customer's choice of wheels and tires. Refer to your owner's manual for recommended tire sizes and warnings related to the use of oversized tires. Larger wheel and tire combinations increase stress and wear on steering and suspension components, which leads to increased maintenance and higher risk for component failure. Larger wheel and tire combinations also alter speedometer calibration, braking effectiveness, center of gravity, and handling characteristics. Consult an experienced local off road shop to find what wheel and tire combinations work best with your vehicle.

#### **NOTE**

All warranty information, instruction sheets, and other documents regarding the installation of this product must be retained by the vehicle owner. Information contained in the instructions and on the warranty card will be required for any warranty claims. The vehicle owner needs to understand the modifications made to the vehicle and how they affect vehicle handling and performance. Failure to provide the customer with this information can result in damage to the vehicle and severe personal injury. Performance Automotive Group  
www.p-a-g.net

# Kit Parts List

## Qty. Description

- 1 **Bracket** (rear bumper, driver)
- 1 **Bracket** (rear bumper, middle)
- 1 **Bracket** (rear bumper, passenger)
- 1 **Extension** (5" Sleeve)
- 1 **Label** (logo)
- 1 **Label** (warning, bumper)
- 1 **Loctite®** (6mL tube)

## 1 **5903BAG (Hardware Bag)**

- 2 **Bolt** (1/2" x 1")
- 2 **Bolt** (9/16" x 1-1/2")
- 2 **Bolt** (8-1.25 x 50mm)
- 2 **Clamp** (#6 hose)
- 2 **Extension** (Spacer Sleeve 1 1/2")
- 2 **Nut** (1/2" Stover)
- 2 **Nut** (9/16" Stover)
- 4 **Tie** (zip)
- 4 **Washer** (1/2" SAE)
- 2 **Washer** (8mm Flat)
- 4 **Washer** (9/16" SAE)