

INSTALLATION MANUAL

NDB-1002



ACCESSORY:

No Drill Bolt on Bracket Kit
Dodge Cummins 1989 - 1993
Ford Powerstroke 1999-2012

FASS[®]
Diesel Fuel Systems

ENGINEERED EXCELLENCE

INSTALLATION MANUAL

Follow these steps to ensure a simple installation of your new FASS ACCESSORY

1. *Read the installation manual completely before attempting installation. The installation of this product indicates that the buyer has read and understands the limitations of the FASS manufacturers warranty agreement and accepts the responsibility of its terms and conditions.*
2. Inventory the package components. Notify the place of purchase immediately of any parts missing or damaged.
3. The installation recommendations contained herein are guidelines. Use good judgment and take into consideration your vehicles' accessories.
4. For best results in accuracy and efficiency (due to training, communication, and our relationship with our dealer network), we recommend an Authorized or ViP FASS [Fuel Systems](#) dealer for the installation. They are prepared to install the FASS fuel pumps with the most efficiency. If a situation/problem arises during the installation, they are the most prepared for that situation/problem. DPPI is not responsible for any installation mistakes.

CONTENTS



4 Hex Bolt 3/8" -16x 1 1/2"



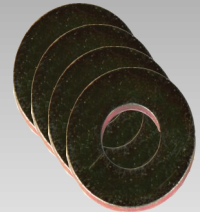
3 Hex Bolt 1/4"-20x1 3/4"



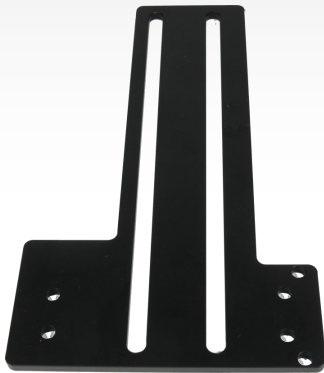
4 Locking Nut 3/8"



3 WA-1001D



4 3/8" Washers



PBR-2001



PFB-2002



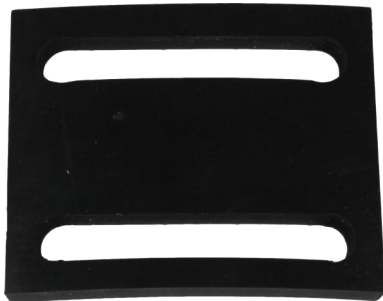
1 1/2" Washers



1 Hex Bolt 1/2" -20 x 1 1/2"



PFB-2001C



RS-2002

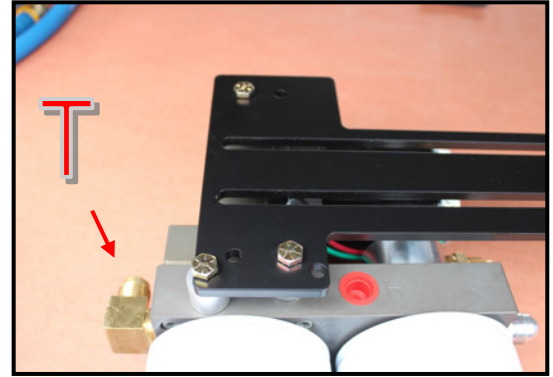
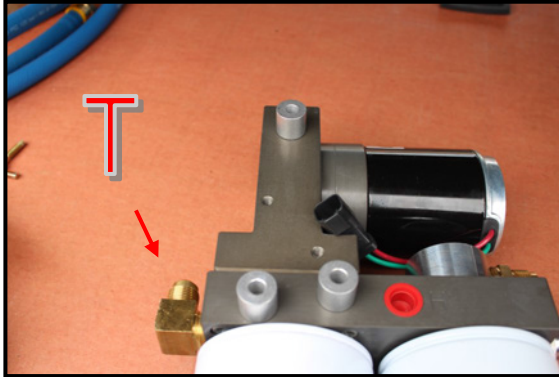


RS-2001

Note: Refer to pages 5-11 when installing on Dodge pickup truck applications and pages 11 when installing on Ford pickup truck applications.

1989-1993 Dodge Applications

- A. For fitting purposes. Secure PBR-2001 to pump assembly lightly with (3) 1/4"-20x1 3/4 bolts and (3) WA-1001D. This assembly will be used in future steps for correct fitting of brackets. (**Note: Bracket maybe flipped to accommodate your application.**)



- B. Insert PFB-2001C in to bed channel align the nut with the opening on the channel.



- C. Secure PFB-2002 and RS-2001 with (1) hex bolt 1/2" -20 x 1 1/2" and (1) 1/2" washer to PFB-2001C

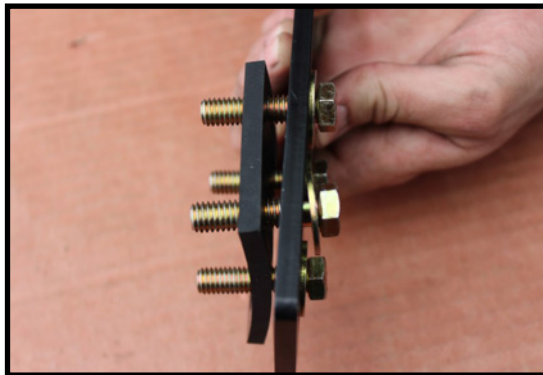


1989-1993 Dodge Applications

- D. Position the PBR-2001 to the PFB-2002 pump assembly at the mounting location and check for fit. Once location is established mark location for mounting in next step.



- E. Assemble the FASS pump bracket PBR-2001 using the RS-2002 spacer between PFB-2002 and PBR-2001 bracket with (4) 3/8 bolts, nuts, and washers. **Note: Torque bolts not flange nut.**

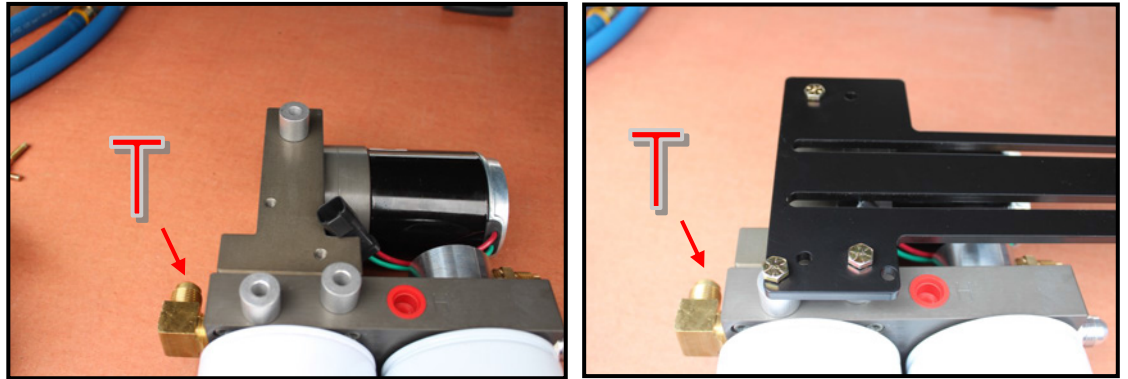


- G. Once secure use (3) 1 3/4 bolts and 3-WA-1001D spacers to mount the pump to the bracket.

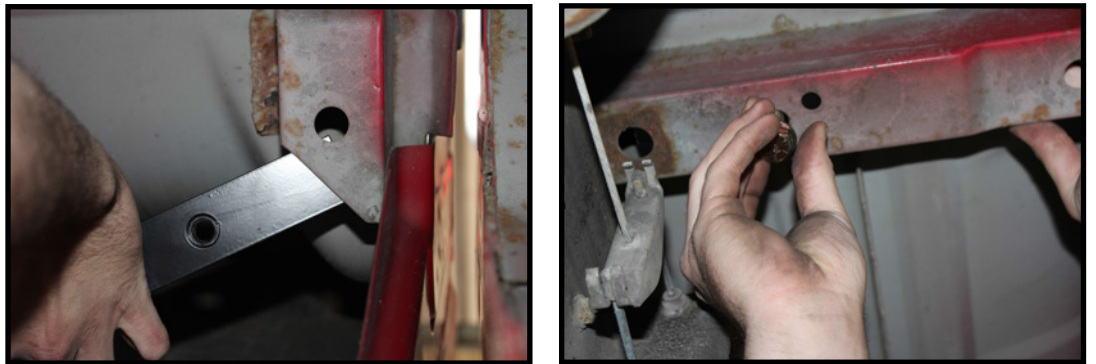


1999-2012 Ford Applications

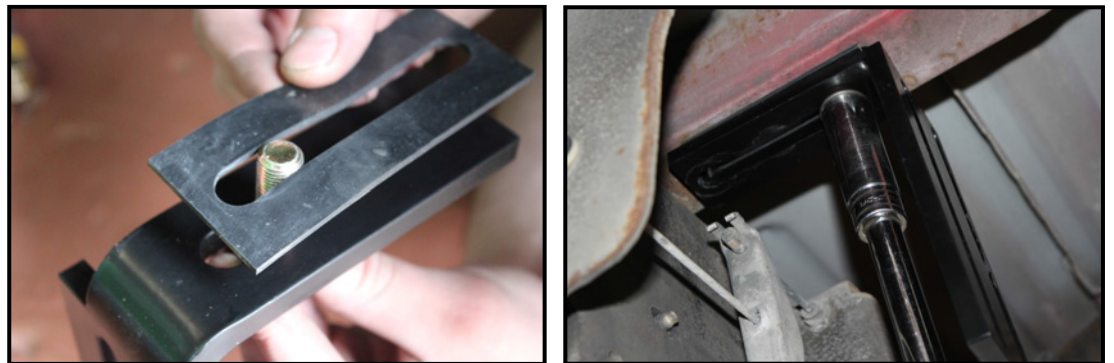
- A. For fitting purposes. Secure PBR-2001 to pump assembly lightly with (3) 1/4"-20x1 3/4 bolts and (3) WA-1001D. Assembly will be used in future steps for correct fitting of brackets. **(Note: Bracket maybe flipped to accommodate your application.)**



- B. Insert PFB-2001C in to bed channel align the nut with the opening on the channel.



- C. Secure PFB-2002 and RS-2001 with (1) hex bolt 1/2" -20 x 1 1/2" and (1) 1/2" washer to PFB-2002C

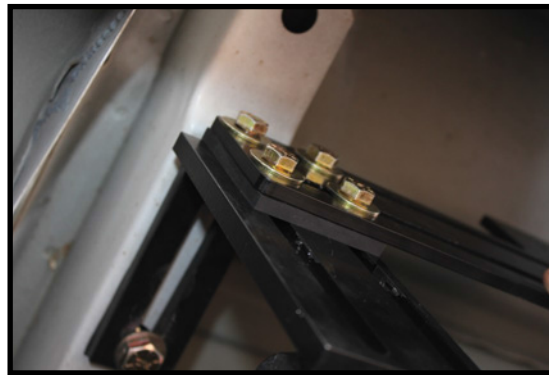
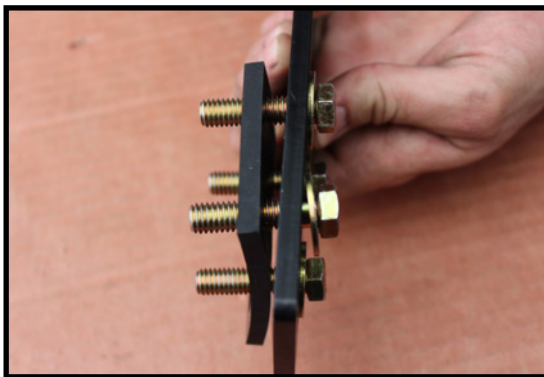


1999-2007 2011-2012 Ford Applications

- D. Position the PBR-2001 to the PFB-2002 pump assembly at the mounting location and check for fit. Once location is established mark location for mounting in next step.



- E. Assemble the FASS pump bracket PBR-2001 using the RS-2002 spacer between PFB-2002 and PBR-2001 bracket with (4) 3/8 bolts, nuts, and washers. **Note: Torque bolts not flange nut.**



- F. Once secure use (3) 1 3/4 bolts and (3)WA-1001D spacers to mount the pump to the bracket.



2008-2010 Ford Applications (Continuation off of Page 7)

- B. Insert PFB-2001C in to bed channel align the nut with the opening on the channel.



- C. Secure PFB-2002 and RS-2001 with (1) hex bolt 1/2" -20 x 1 1/2" and (1) 1/2" washer to PFB-2002C

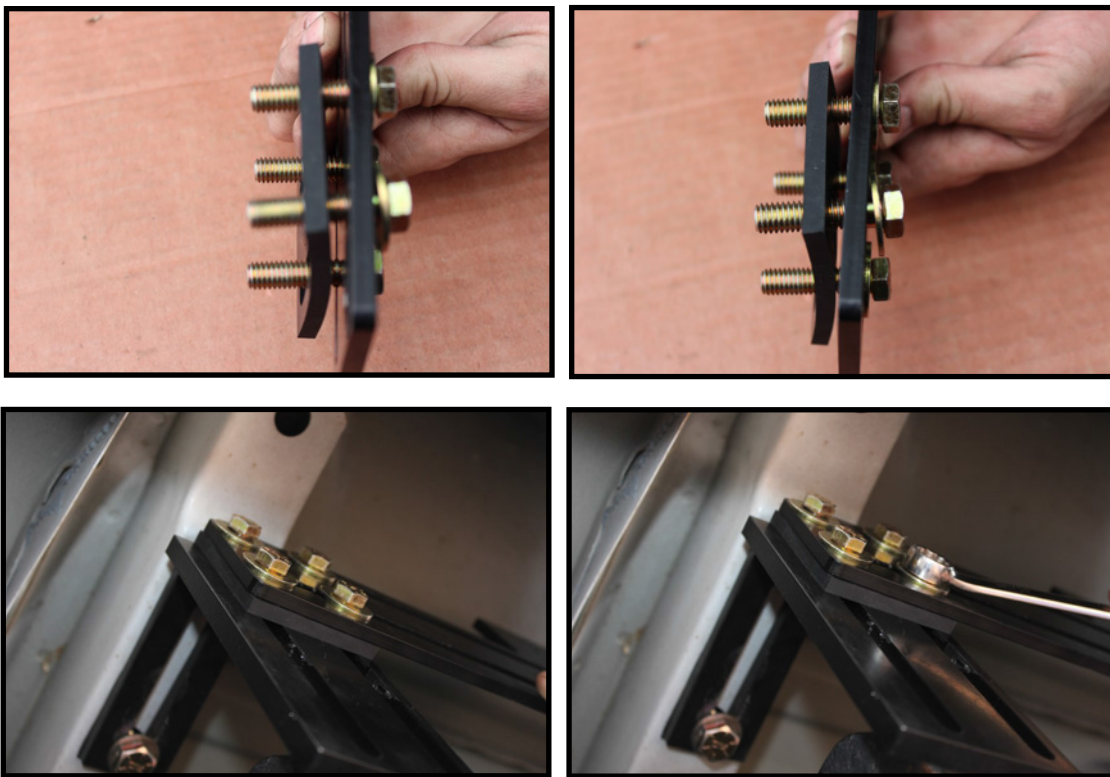


- D. Position the PBR-2001 to the PFB-2002 pump assembly at the mounting location and check for fit. Once location is established mark location for mounting in next step.



2008-2010 Ford Applications

- F. Assemble the FASS pump bracket PBR-2001 using the RS-2002 spacer between PFB-2002 and PBR-2002 bracket with (4) 3/8 bolts, nuts, and washers. **Note: Torque bolts not flange nut.**



- G. Once secure use (3) 1 3/4 bolts and (3)WA-1001D spacers to mount the pump to the bracket.

