

INSTALLATION MANUAL

D-MAX SERIES



APPLICATION:

D-MAX 7002 (70gph @ 10psi)

Duramax Fuel Pump

2011-2012



PICKUP



Dear Valued Customer,

“**Made in the USA**” is not just a slogan at FASS; it’s what we live by! FASS is not only assembled in the USA but 98%+ of the FASS product is manufactured in the USA, helping to employ Americans and strengthen America. At FASS, we scrutinize our suppliers and demand the highest quality American-made components. However, this does come at a price, which is one of the main reasons FASS products are more expensive than the competition. Remember price does not dictate quality but quality does dictate price! Here at FASS, we believe it’s worth the commitment and will continue this practice to support America! Our competition is doing exactly the opposite by using foreign-made components.

Building extremely “High-Quality” fuel products is our business. We concentrate all of our efforts in this arena. No one else is as specialized as FASS in what we do! This is one of the ingredients to insure you are running with the “Highest-Quality” fuel system in the world! We have implemented very rigorous testing procedures to provide the “Highest Quality” we have become known for. Not only is our product superior, but customer satisfaction is #1 at FASS. It is our goal to provide the best service possible. Our confidence is evident in the products we make as each product is backed by an industry leading warranty!

Our R & D department, in conjunction with our Dealer Support department, is continually searching for ways to improve quality, expand our product line, and provide superb support to our network of dealers so our customers’ needs and expectations will be exceeded.

To help insure you receive the proper system and customer support at the local level, FASS has a VIP and Authorized Dealer network representing FASS products. This is one reason you must purchase through a dealer to comply with our warranty policies. **If you do not, there is no warranty!** We recommend you go to www.FASSride.com, click “Find A Dealer”, put in their ZIP code, select the type of dealer, and see if the company you purchased from is listed. If they are not, put their phone number in the field below the ZIP code field to see if they are listed. Below these two fields is a list of “Terminated/Unauthorized” dealers. You may want to review this list. If the company is not listed or is on the “Terminated/Unauthorized” list, we suggest you return the product immediately to that dealer and call FASS. We’ll recommend you to the nearest dealer.

VERY IMPORTANT: Make sure to fill out your product registration form and return the original form to FASS Fuel Systems within 30 days of purchase accompanied with a copy of the purchase receipt. Complying with these guidelines will qualify you for the Extended Warranty!

See the Owner’s Manual for full Limitation of Warranty. In the event that the buyer does not agree with this agreement: the buyer may promptly return this product, in a new and unused condition, with a dated receipt, to the place of purchase within thirty (30) days from date of purchase for a full refund less shipping.

The installation of this product indicates that the buyer has read and understands the Limitation of Warranty agreement and accepts its terms and conditions.

!WARNINGS!

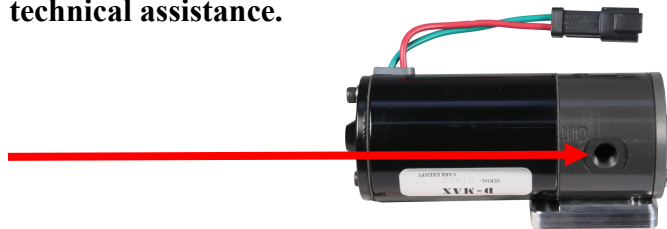
- Read all instructions before starting installation of this product!
- Installing the improper FASS Pump can cause *severe* engine damage.

FASS	Recommended Application
D-MAX 7002	Duramax 2011-2012 with stock - slight horsepower modifications
Note: Due to the increase of fuel flow you may encounter a problem with the stock fuel module. Adding a FASS suction tube kit will solve that issue.	

- Secure vehicle from **ROLLING!**
- Use caution when drilling. Steer clear of any electrical wires , air lines or other damageable components.
- Consult vehicle's manufacturers' instructions concerning the electrical system before attempting any electrical connections.
- Be sure that the serial # on this installation manual matches that of the outside of the box.



- Flush and clean all brass fittings and fuel line from debris.
- Keep debris from entering the internals of the system during installation. Getting debris in the "T" port can lock up the motor. If the motor does lock up from debris call FASS for technical assistance.



- Be sure to utilize the inline fuel filter included in this kit, or the equivalent, to prevent a motor lock up.
- Wear safety glasses when operating power tools such as drills and grinders or when using a punch or chisel.
- Properly secure lines to prevent chaffing.

INSTALLATION MANUAL

A fuel pressure gauge is highly recommended to identify fuel filter life and to prevent engine damage!

Follow these steps to ensure a simple installation of your new FASS D-MAX FUEL PUMP

1. Inventory the package components completely. Notify the place of purchase immediately of any parts missing or damaged.
2. *Read the installation manual completely before attempting installation. Understand how the system operates and read installation recommendations before beginning installation.*
3. The installation recommendations contained herein are guidelines. Its important to understand your vehicles accessories and limitations. Use good judgment and take in to consideration your vehicles' accessories.
4. If any installation procedure is uncertain, contact FASS technical support.

Email techsupport@FASSride.com with the following information:

- Your Name, address and daytime phone number
- Model **(D-MAX 7002)**
- Serial Number
- Last 6 of vehicles' VIN
- Date of purchase
- Nature of Your Concern

Call customer service; [636-433-5410](tel:636-433-5410) with the following information:

- Model **(D-MAX 7002)**
- Serial Number
- Last 6 of vehicles' VIN
- Date of purchase

Serial # Found Here....



D-MAX PUMP SERIES

70 GPH

10 PSI (APPROXIMATELY)

A fuel pressure gauge is highly recommended to identify fuel filter life and to prevent engine damage!



INSTALLATION

- Step 1: Install Electrical Harness
- Step 2: Prepare Suction and Feed Lines
- Step 3: Mount Fuel System
- Step 4: Install Fuel Line
- Step 5: Review Installation

CONTENTS



FF-3248



FL-1002 x 6'



WH-1006

CONTENTS



PL-2003



Wire Ties



DIPF-1003



HC-1001



PLB-1212



QD-1002



Hex Bolt 5/16-18x1/2



Flag Terminal



Ring Terminal



Fuse Tap



MOUNTING TEMPLATE



STEP 1: INSTALL ELECTRICAL HARNESS

Note: The installation of the electrical harness is done first, allowing power to be applied to the pump for lubrication purposes later in the installation.

Note: The use of a corrosion preventative on electrical connections is recommended.

- a. Crimp the ring terminals to the red and green wires of the WH-1006 Wire Harness. Attach red wire to the positive terminal of the battery and the green terminal to the negative terminal.

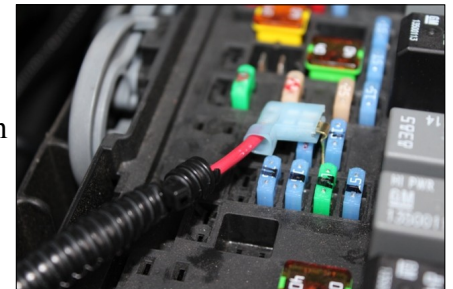


- b. Secure relay and fuse in an upright position, as shown, to prevent moisture from entering. Di-electric grease may be applied to prevent corrosion.



Note: Connect the fuse tap to the hot side of the fuse. Use a test probe to locate the “hot side” of the circuit in the fuse block.

- c. Using the fuse tap & flag terminal, connect the red lead to a terminal on the circuit board that is “hot” when the key is on.



Note: Completion of this step will be addressed in the Mounting Step 3.

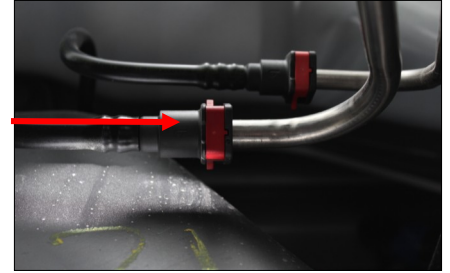
- d. Route WH-1006 wire harness along frame rail to mounting location of pump.

STEP 2: PREPARE SUCTION & FEED LINES

Note: Hose clamps are not recommended for push lock fittings. They will hold up to 300 psi!

Note: Use oil on fittings and inside fuel line when installing Push-Lok fittings.

- a. Disconnect the factory suction line located in front of the fuel tank. Pull the red square tab out and push in the rounded tab, releasing the fitting from the steel beaded feed line.



- b. Using oil, insert PLB-1212 into one end of the provided FL-1002 fuel line. Feed line over frame to the stock fuel connection.



- c. Push the PLB-1212 into the factory suction line until you hear a click and the tabs are locked in place. Slide square tab back in to secure.



- d. Using an HC-1001 hose clamp, insert the QD-1002 into the other end of the provided FL-1002 fuel line and secure. Oil the rings inside the QD-1002 and slide over the factory feed line until you hear a click. **Do not cut the line at this time.**



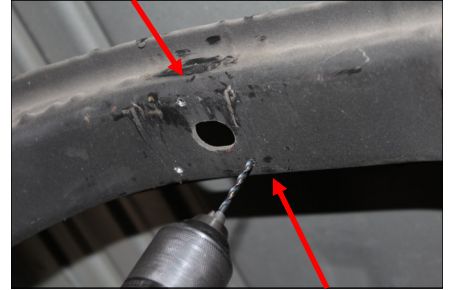
STEP 3: MOUNT FASS FUEL PUMP

- a. Position system to mounting location on the cross member directly in front of the fuel tank making sure there are no obstructions. The pump should be mounted parallel to the frame.



Caution: Make sure the mounting holes are not located on the radius bend of the cross member.

- b. Using template, mark holes. Pre-drill with 1/8" bit and final drill with 5/16" bit.

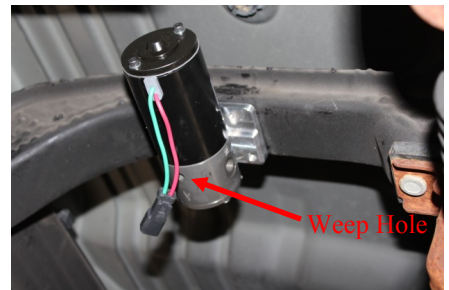


Note: The weep hole *must* face down for proper pump operation, any other direction will void warranty



Note: Use Loctite on mounting bolts

- c. Mount pump to the cross member using three 5/16" bolts. Reach between the cross member and the bed to install the 3 bolts and tighten with a 1/2" socket.



Note: The DIPF fitting does not require sealant on it's threads. It is an O-ring sealed fitting.

- d. Install two DIPF-1003 fittings into the Inlet/Outlet ports on the DMAX. Torque to 18 ft./lbs.



- e. Connect the male end of the wire harness to the female electrical connector on the FASS pump. Turn key to the "On" position. With the FASS pump on, squirt a liberal amount of WD-40 or other lubricant into the Inlet port. This procedure will "wet" the Gerotor and allow for better suction during initial priming.

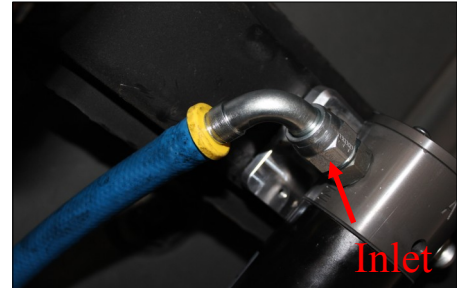
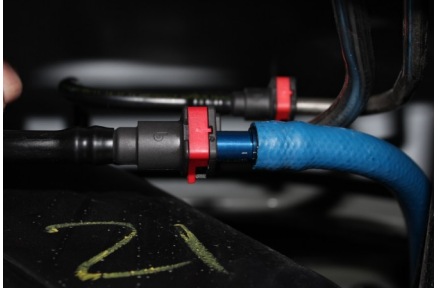


STEP 4: INSTALL FUEL LINES

Caution: Do Not use sealant on AN fittings.

Note: When installing Push-Lok fittings into fuel line, use oil on fittings and in the line.

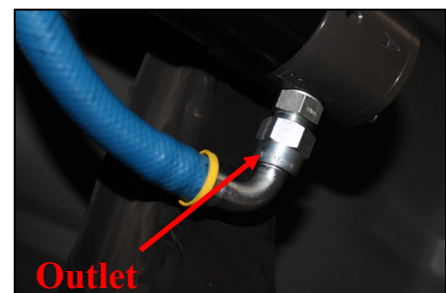
- a. Route suction line from Step 2c to the Inlet port. Cut FL-1002 to needed length. Using oil, insert PL-2003 and connect to the DIPF-1003. Torque to 18 ft./lbs.



- b. Install in-line fuel filter in an accessible location in the suction line using the HC-1001's. Make sure the fuel flow travels the direction of the arrow on the canister.



- c. Measure from the factory feed connection from Step 2d to the Outlet port of the FASS pump. Cut and insert PL-2003. Connect to the Outlet DIPF-1003. Torque to 18 ft./lbs.



- d. Secure all fuel lines and electrical harness with wire ties.

STEP 5: REVIEW INSTALLATION

- Blow out any open lines/cover any open ports
- Bolts and fasteners properly tightened?
- Electrical harness and fuel lines secured and properly tightened?
- Has the system been primed?
 1. Turn key to the ignition position, turning on the FASS pump for 15 sec..
 2. Crank engine and allow to run for at least 1 minute.
- Check for leaks.
- Start the engine
- Recheck all fluid and filter connections for leaks
- Fill out product registration, attach receipt of purchase and mail to:

FASS Fuel Systems
16240 State Hwy O, Suite B
Marthasville, MO 63357

LIMITATION OF 4 YEAR WARRANTY

Disclaimer: To help insure you receive the proper system and customer support at the local level, FASS has a VIP and Authorized Dealer network representing FASS products. This is one reason you must purchase through a dealer to comply with our warranty policies. If you do not, there is no warranty! We recommend you go to www.FASSride.com, click "Find a Dealer", put in their ZIP code, select the type of dealer, and see if the company you purchased from is listed. If they are not, put their phone number in the field below the ZIP code field to see if they are listed. Below these two fields is a list of "Terminated/Unauthorized" dealers. You may want to review this list. If the company is not listed or is on the "Terminated/Unauthorized" list, we suggest you return the product immediately to that dealer and call FASS. We'll recommend you to the nearest dealer.

Diesel Performance Products, Inc. (hereafter "SELLER") gives Limited Warranty as to description, quality, merchantability, fitness for any product's purpose, productiveness, or any other matter of SELLER'S product sold herewith. The SELLER shall be in no way responsible for the product's open use and service and the BUYER hereby waives all rights other than those expressly written herein. This Warranty shall not be extended or varied except by a written instrument signed by SELLER and BUYER.

When MANUFACTURER receives the "ORIGINAL" PRODUCT REGISTRATION form with a copy of the "BILL OF SALE/SALES RECEIPT" within 30 days of the sale, then the following applies! The Warranty will then and only then be validated to that of which typically accompanies your unit for your specific application from the date of sale or for recommended service life and limited solely to the original purchaser and/or vehicle and parts contained within the product's kit. This warranty does not cover normal wear on consumable items such as but not limited to filters, fuel line, wire harness & etc. The warranty does not cover seized gears due to lack of filtration. Warranty is voided if used with other than diesel fuel. Returned items will arrive prepaid to the place of purchase. Diesel Performance Products, Inc. will repair, without cost, any product found to be defective during the warranty period; parts only, or at its option, will replace such products in exchange for the product. Repair or replacements are warranted for the remainder of the original warranty period. All Warranty claims are subject to approval by Diesel Performance Products, Inc.

A Return Material Authorization (RMA) number must be obtained before any product is to be returned to Diesel Performance Products, Inc. for warranty consideration, repair or product return. Requests for product returns must be offset by an equal value order. Return parts must be completed and in resalable condition. No returns after 30 days.

The following information is required to obtain a RMA number before returning product:

Your Name, Address, and Phone Number's
Model and Serial Number (Not Motor Number) Example: Model HD Series, Serial: 00125966
VIN Number of Vehicle
Date of Purchase
Nature of Problem

RMA and Product Serial Number must be on all paperwork and correspondence. Failure to obtain the required information or paperwork will result in \$25.00/item penalty and delay or denial of any warranty claim.

Under no circumstances shall the SELLER and/or MANUFACTURER be liable for any labor charged or travel time incurred in diagnosis for defects, removal, or reinstallation of this product, or any other contingent expenses.

Under no circumstances shall the SELLER and/or MANUFACTURER be liable for any damage or expenses insured by reason of the use or sale of any such equipment. This warranty does not apply to products which Diesel Performance Products, Inc. has determined to have been misused or abused, improperly maintained by the user, or where the malfunction or defect can be attributed to the use of non-genuine Diesel Performance Products, Inc. parts.

IN THE EVENT THAT THE BUYER DOES NOT AGREE WITH THIS AGREEMENT: THE BUYER MAY PROMPTLY RETURN THIS PRODUCT, IN A NEW AND UNUSED CONDITION, WITH A DATED PROOF OF PURCHASE, TO THE PLACE OF PURCHASE WITHIN THIRTY (30) DAYS FROM DATE OF PURCHASE FOR A FULL REFUND LESS SHIPPING.

THE INSTALLATION OF THIS PRODUCT INDICATES THAT THE BUYER HAS READ AND UNDERSTANDS THIS AGREEMENT AND ACCEPTS ITS TERMS AND CONDITIONS.

Technical Support:

Diesel Performance Products, Inc.
16240 State Hwy O Suite B
Marthasville, MO 63357