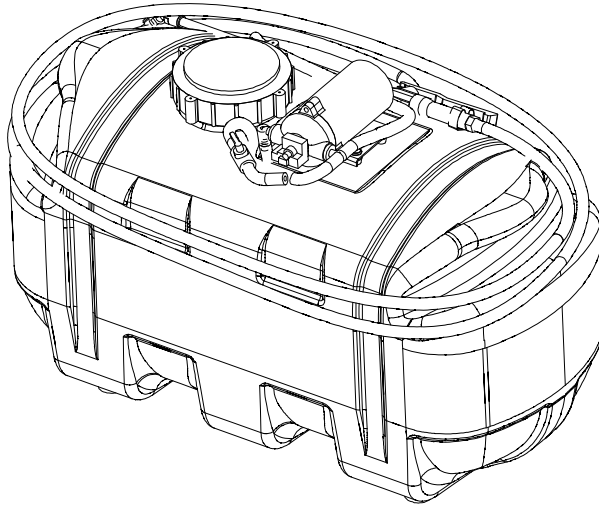




15, 25 AND 45 GALLON Premium Spot Sprayer



OWNER'S MANUAL

**CUSTOMER MUST RECEIVE A COPY OF THIS
OWNER'S MANUAL AT TIME OF SALE**

INTRODUCTION

Using Your Operator's Manual

Read this entire operator's manual, especially the safety information, before operating. This manual is an important part of your machine. Keep all manuals in a convenient location so they can be accessed easily.

Use the safety and operating information in the attachment operator's manual, along with your machine operator's manual, to operate and service the attachment safely and correctly.

SAFETY

Read Safety Precautions in Machine Operator's Manual

Read the general safety operating precautions in your machine operator's manual for additional safety information.

WARNING: DO NOT EXCEED THE RECOMMENDED RACK WEIGHT OF YOUR VEHICLE.

WARNING: ADDITIONAL WEIGHT OF LIQUID IN THE SPRAYER MAY CAUSE SLOSHING AND INSTABILITY.

Operate Safely

- Read the machine and attachment operator's manual carefully. Be thoroughly familiar with the controls and the proper use of the equipment. Know how to stop the machine and disengage the controls quickly.
- Do not let children or an untrained person operate machine.
- Make any necessary adjustments before you operate. Never attempt to make any adjustments while the engine is running.
- Take all possible precautions when leaving the machine unattended. Shut off the engine before making any repairs, adjustments, or inspections. Lock the parking brake, stop the engine, and remove the key.
- Look behind machine before you back up. Back up carefully.
- Do not let anyone, especially children, ride on machine or attachment. Riders are subject to injury such as being

struck by foreign objects and being thrown off. Riders may also obstruct the operator's view, resulting in unsafe machine operation.

- If the machine vibrates abnormally, stop the engine and check immediately for the cause. Vibration is generally a warning of trouble.
- Always inspect the sprayer completely before and after each use. Before pressurizing the system, check to be sure all fittings and hoses are tightly installed. Be sure guards and shields are in good condition and fastened in place. Make any necessary adjustments before you operate.
- Never use the sprayer during windy conditions.
- Always release pressure in the system before filling, cleaning or servicing the sprayer.
- Do not put nozzle tip or other sprayer parts to your lips to blow out dirt. Use compressed air.
- If the sprayer is mounted to the bed of a utility vehicle, never raise the bed with the sprayer installed. Empty the sprayer and remove it from the bed if you need to raise the bed for any reason.

Parking Safely

1. Stop vehicle on a level surface, not on a slope.
2. Lock park brake.
3. Stop engine.
4. Remove key.
5. Before you leave the operator's seat, wait for engine and all moving parts to stop.

Mix and Handle Chemicals Safely

- Wear full cover clothing and always wear protective goggles and rubber gloves to protect yourself while handling chemicals.
- Follow instructions on chemical container labels.
- Open all chemical containers carefully, using proper tools.
- Open, pour, weigh and mix chemicals in a well-ventilated area.
- Reserve all equipment used for the application of chemicals exclusively for that purpose.
- Prohibit all smoking, drinking and eating food in chemical-handling area.
- It is a good practice to take a soapy shower immediately after using the sprayer to apply chemicals.
- Clothing worn when using chemicals should be washed separately in the laundry after spraying is completed.

Read Chemical Container Label

- Chemicals can be dangerous. Improper selection or use can injure persons, animals, plants, soils or other property.

Select the right chemical for the job and handle and apply with care.

- Read the instructions, precautions, and warnings on the container label before opening. Use the product strictly according to label directions for specific applications, in the amounts specified, at the times specified and only when needed.
- Keep the container closed tightly except when preparing the mix.
- Do not remove labels from chemical containers. Store all chemicals according to label.

Dispose of Chemicals Properly

- Proper disposal of excess spray material is very important. If you have excess tank solution, it is best to dilute it with water and apply it to the area you previously treated.
- Never dump solution into a drain or near a lake or stream.
- Chemical containers should be triple-rinsed, with the rinse water added to the sprayer tank. Do not burn empty chemical containers. Dispose of containers at recycling centers.

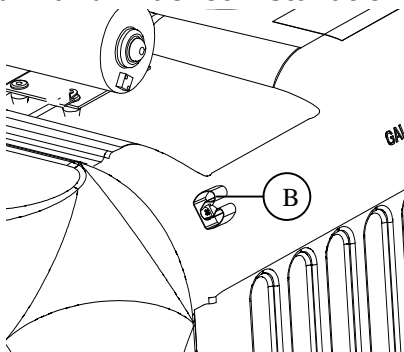
Handling Waste Product and Chemicals

Waste products, such as, used oil, fuel, coolant, brake fluid, and batteries, can harm the environment and people:

- Do not use beverage containers for waste fluids - someone may drink from them.
- See your local Recycling Center or authorized dealer to learn how to recycle or get rid of waste products.
- A Material Safety Data Sheet (MSDS) provides specific details on chemical products: physical and health hazards, safety procedures, and emergency response techniques. The seller of the chemical products used with your machine is responsible for providing the MSDS for that product.

45 Gal Premium Assembly (45 ga only)

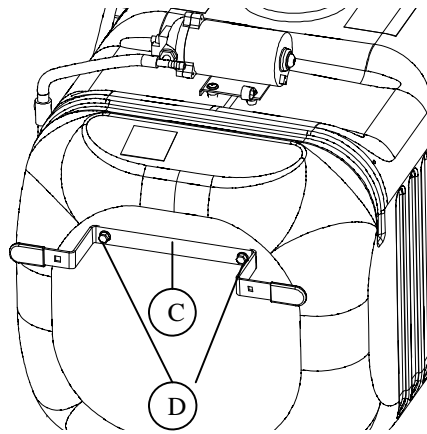
Hand Wand Bracket Installation



19B09V1

Install hand wand clip using 1-10/24 truss head screw as shown (B).

Hose Tender Installation

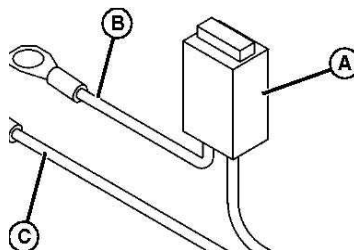


Install hose tender bracket (C) using two 5/16 x 5/8 in. flange bolts (D).

OPERATION

1. Secure the Sprayer to your vehicle with 2 tie-down straps.
2. Install Wiring Harness

IMPORTANT: Avoid damage! To help prevent electrical spark, install red wire to the positive (+) battery terminal first. Then install black wire to negative (-) battery terminal.



- Fuse holder (A) should contain a 15 A / 32 V fuse. Make sure fuse filament is not broken.
 - Remove nut from positive (+) battery cable clamp. Install red lead (B) onto clamp bolt. Install and tighten nut completely.
 - Remove nut from negative (-) battery cable clamp. Install black lead (C) onto clamp bolt. Install and tighten nut completely.
 - Attached wire harness switch to the pump and battery harness end. Make sure the wiring is off of the ground and away from moving parts.
3. Fill tank.

NOTE: When filling tank, consider the area to be sprayed and amount of solution required to

complete the task in order to help eliminate excess waste.

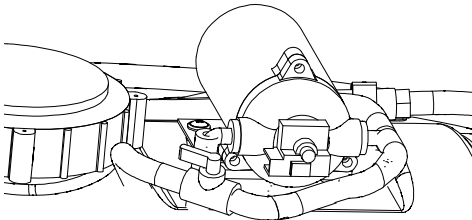
- Clean area around tank filler cap to prevent tank contamination.
- Remove tank filler cap and fill tank.

CAUTION: USE EXTREME CAUTION WHEN OPERATING VEHICLE WITH SPRAYER MOUNTED.

USE CAUTION ON INCLINED SURFACES.

WEIGHT IS ADDED TO THE RACK AND SLOSHING COULD OCCUR. THIS CAN CAUSE VEHICLE INSTABILITY.

4. Turn switch to on position.



5. The sprayer is equipped with a recirculation valve to aid in material agitation and pressure control. This valve is in the "open" position when the valve handle is in line with the hose (pictured), "closed" when perpendicular to the hose.

- Adjusting the recirculation valve between the open/closed positions will affect the pressure coming through the spray wand.
 - Closed position is full pressure through spray wand
- It may be helpful to adjust the pressure when spraying with the spray wand to avoid damage to plants from excess pressure.
- If your sprayer is equipped with a boom, this valve should be in the "closed" position

6. Spray Wand Operation

- Squeeze the handle to spray
- Nozzle Spray Pattern – To change the spray pattern, tighten or loosen tip as desired.
- The spray wand is equipped with a lock. Squeeze handle and flip lock backwards to lock handle in ON position.

- Release handle to stop spraying. The pump should automatically shut off when trigger is released.

7. Turn electrical switch to off position when spraying is complete.

Spraying Tips

- Do not let sprayer run in one spot.
- Do not overspray when you use weed killers.
- Liquid spray material is recommended. Sprayer does not agitate wettable powders.
- Timely applications of a smaller dosage are better than large applications.
- Turn sprayer off during turns to avoid double spraying.
- Fill sprayer where spills cannot harm grass.
- Follow manufacturer's recommendations for application of specific chemicals.
- Stop sprayer when tank is empty.

Removing Sprayer

1. Park machine safely. (See Parking Safely in the Safety section.)
2. Empty the sprayer tank.
3. Disconnect the main wiring harness only. Leave all other harnesses installed on machine.
4. Roll up the main harness and store with sprayer.
5. Remove Tie-down straps.

Draining and Cleaning Sprayer Tank

1. Remove drain plug and empty sprayer tank. Empty remaining solution into an appropriated container for proper disposal.

IMPORTANT: Proper disposal of excess spray is very important. Dilute it with water and apply it to area previously treated.

Never dump excess into a storm drain or near a lake or stream.

2. Spray all inside surfaces of tank with low pressure garden hose to remove any remaining solution.

Rinse sprayer tank, pump, sprayer wand and all hoses thoroughly with fresh clean water.

Rinse several times to make sure sprayer tank is clean and free of chemicals.

3. Once the tank is empty, wipe out inside of sprayer tank with a clean cloth or paper towel.

4. Replace drain cap.

Lifting Sprayer Safely

Use caution when lifting the 15 and 25 gal sprayers to help prevent possible injury.

15 Gallon Sprayer - Filled with liquid is 68 kg (150 lb)

25 Gallon Sprayer - Filled with liquid is 106 kg (253 lb)

45 Gallon Sprayer - Filled with liquid is 163 kg (390 lb)

SPECIFICATIONS

The hand wand in stream mode sprays at approximately 35 PSI. When in fan mode it is approximately 40 PSI. The following chart can be used for through-put approximations:

PSI	30	40	60	90
GPM	1.65	1.59	1.51	.96
L/min	6.24	6.0	5.72	3.6

NOTE: When combined with a boom, use the calibration tables included with the boom to calibrate the unit.

15 and 25 Gallon Sprayer

15 Tank 15 gallon (57 L)

25 Tank 25 gallon (95 L)

45 Tank 45 gallon (170 L)

Pump:

Type Electric Motor and Diaphragm

Manufacturer SHURFlo

Current Draw 7 Amp

Fuse 15 Amp

System Pressure 100 PSI (689 kPa)

Spray Rate (Open Flow) 2.0 gal/min. (7.9 L/min.)

Suction Hose Strainer Stainless Steel

Sprayer Wand:

Material #18 orifice, plastic, filter in handle

Adjustment..... Fan to Stream

Sprayer:

15 gal. Full 68 kg (150 lb)

25 gal. Full 106 kg (253 lb)

25 gal. Full 163 kg (390 lb)

WARRANTY

ONE YEAR LIMITED WARRANTY

For the period of one year from the purchase date Cycle Country Accessories Corporation will replace for the original purchaser, free of charge, any part or parts, when found, upon examination by Cycle Country Accessories Corporation, to be defective in material, workmanship, or both. All transportation cost incurred by the purchaser in submitting the material to Cycle Country Accessories Corporation for replacement under this warranty must be borne by the purchaser. If Cycle Country Accessories Corporation determines that the product must be returned to the factory for credit please call 1-800-841-2222 for an RMA number and shipping instructions. The warranty does not apply to parts that have been damaged by accident, alteration, abuse, improper lubrication, normal wear, or other causes beyond Cycle Country Accessories Corporation's control. Products such as engines, electric motors, and actuators may carry an original manufacturer's warranty.

For more information, please contact:

CYCLE COUNTRY ACCESSORIES CORPORATION

701 38th Ave. West

PO BOX 257

SPENCER, IA 51301

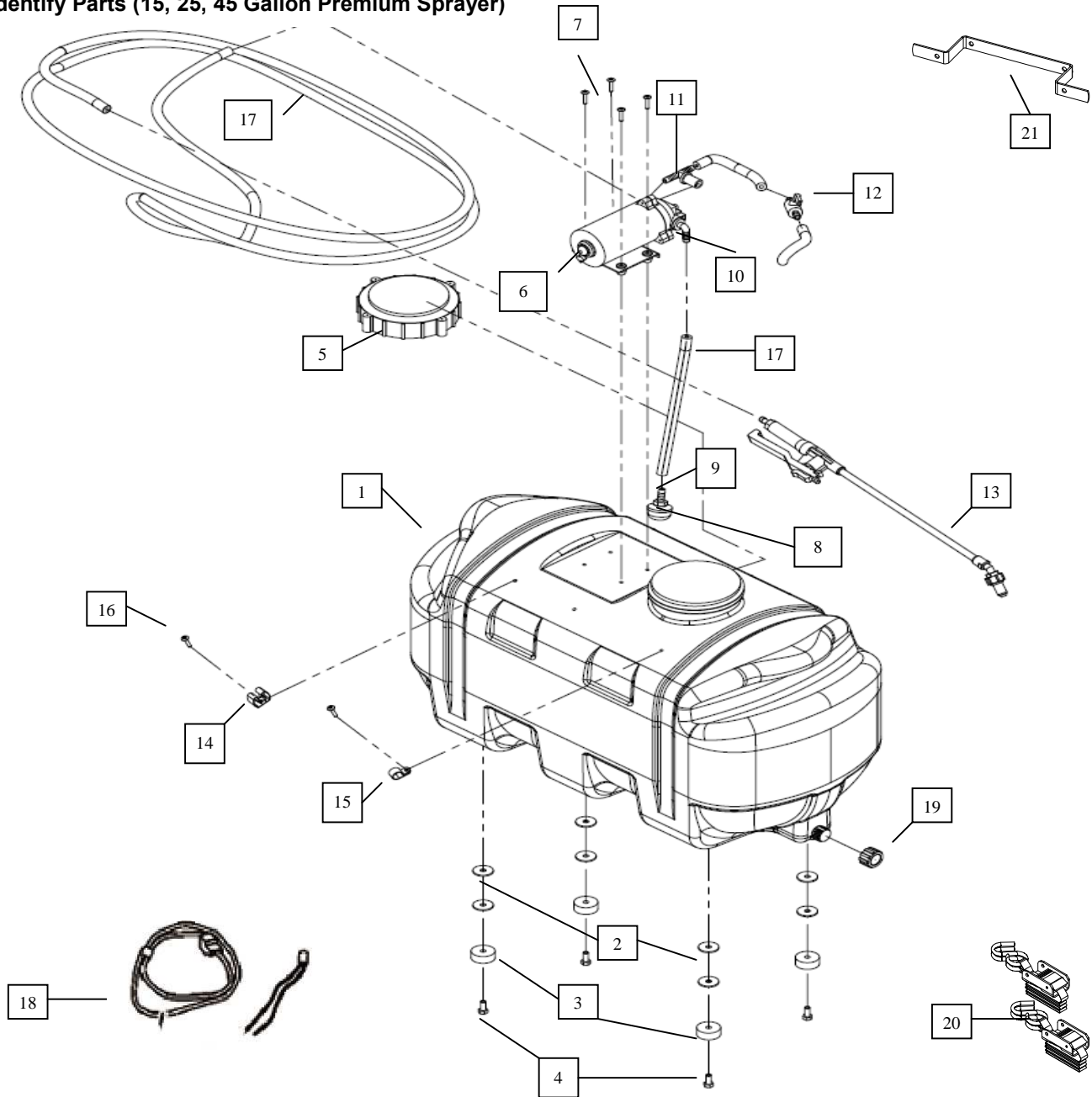
PHONE: 712-262-4191

FAX: 712-262-0248

SERVICE: 800-841-2222

E-MAIL: ccac@cyclecountry.com

Identify Parts (15, 25, 45 Gallon Premium Sprayer)



#	Description	Part #	Qty
1	Tank, 15 ga	RPR0007	1
	Tank, 25 ga	RPR0008	1
	Tank, 45 ga	RPR0050	1
2	Rubber feet	RPR0010	4
3	Fender Washer	RPR0039	8
4	5/16x3/4 bolt	RPR0051	4
5	Tank fill cap	RPR0009	1
6	Pump 100 PSI Shurflo	RPR0030	1
7	Screw, 10/24 x 1" truss head	RPR0036	4
8	Sump strainer	RPR0017	1
9	Sump fitting	RPR0011	1
10	Pump inlet elbow	RPR0012	1

#	Description	Part #	Qty
11	Pump outlet tee	RPR0015	1
12	In-line valve	RPR0005	1
	Hose clamp	RPR0001	
13	Spray gun w/tip	RPR0016	1
14	Spray gun holder	RPR0019	1
15	Hose holder	RPR0013	1
16	Screw, 10/24 X 3/8" truss head	RPR0040	2
17	Hose, black rubber	RPR0018	1
18	Wire harness, complete	RPR0026	1
19	Drain cap	RPR0031	1
20	Tie down straps	RPR0042	2
21	Hose Tender Bracket (45 ga)	RPR0052	1

