



Rock Crawler Rear Bumper

Part No. J013T

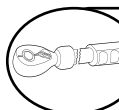
Fits: 1987-2006 Jeep Wrangler YJ,TJ, TJ Unlimited (LJ)



REMOVE CONTENTS FROM BOX. VERIFY ALL PARTS ARE PRESENT.



READ INSTRUCTIONS CAREFULLY BEFORE STARTING INSTALLATION.



DO NOT OVER TORQUE. STANDARD OPERATING LOAD FOR TIGHTEN BODY MOUNT NUTS & BOLTS VARIES FROM 45 TO 65 FOOT POUND.



60-180 min



Cutting Not Required



Drilling Required



support@trailfx.com



1 866 638 4870



POLISHED STAINLESS STEEL – LIMITED LIFETIME
POWDER COATED BLACK – 3 YEARS

PARTS LIST:

Qty	Part Description	Qty	Part Description
1	Tire Mount	3	3/8" x 1" Hex Head Bolt
1	Tire Carrier Top Post	2	3/8" x 1 1/2" Hex Head Bolt
1	Nylon Washer	10	3/8" Flat Washer
1	Circle Clip	8	12 x 30mm Hex Head Bolt
1	Rubber Bushing/Spacer	6	12 mm Nut
1	7/8" x 2 1/2" Hex Head Bolt	8	12 mm Lock Washer
1	7/8" Lock Nut	14	12 mm Flat Washer
2	7/8" Flat Washer	1	#10 x 1" Sheet Metal Screw

Tools Required

Drill	Socket Set
Drill Bit Set	Wrench Set
Ratchet	

INSTALLATION PROCEDURE

1. Remove factory rear bumper or bumperettes.
2. On all models the passenger side inner two holes will not line up with the factory holes and will need to be drilled.
3. Mount bumper on your vehicle and fasten with included bolts using only the outside holes. Make sure bumper is positioned correctly and tighten bolts snug. Use the inner bracket holes as a template; mark the holes on the frame. Now remove bumper and set to the side.
4. **Caution: Use Extreme care and caution before drilling. Make sure to check backside of frame for hazards and obstructions.** Using a 7/16" bit, drill the marked holes. (Figure 1)



5. Position bumper against rear vehicle frame. Attach driver and passenger side rear brackets using (1) 12 x 30mm bolt, (2) 12mm flat washers, (1) 12mm lock washer, (1) 12mm nut, at each of the six mounting holes. **Note:** Do not tighten completely at this time.
6. Using (1) 12 x 30mm bolt, (1) 12 mm flat washer, (1) 12mm lock washer for each hole, mount the bottom brackets of the bumper to the bottom hole in the vehicle frame.(Tighten all hardware now).
7. Place nylon washer over rear bumper post, then place tire carrier on top. Once the tire carrier has been place over post, swing it to the closed position and latch it into place. Secure it with the already installed bolts. (Figure 2 and 3).
8. Carefully place the Circle Clip on top of the post over the tire carrier portion.

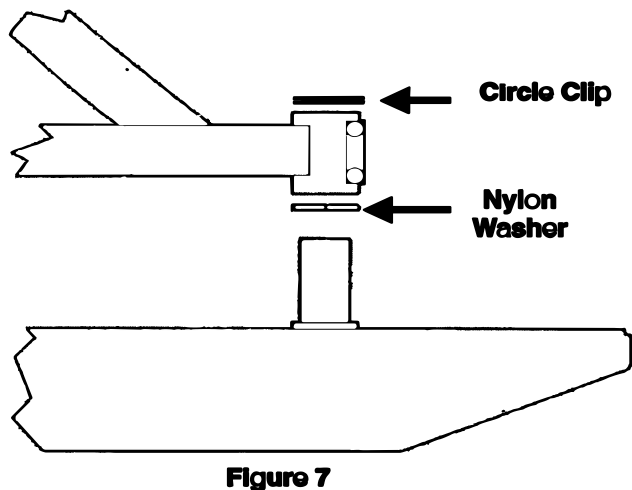


Figure 7

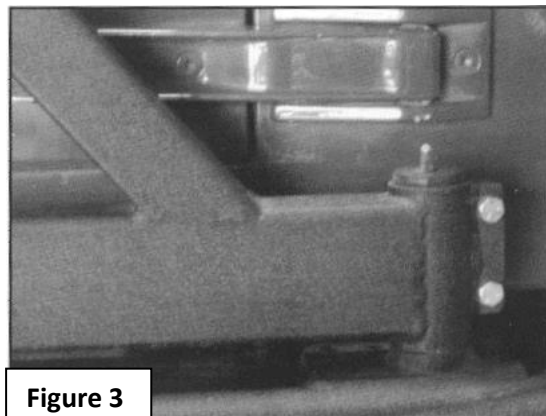


Figure 3

(Figure 2)

9. Locate the tire carrier top post, along with (1) 7/8" x 2 1/2" Hex Head Bolt, (2) 7/8" Flat Washer, and (1) 7/8" Lock Nut. Insert the top post into the top of the tire carrier and secure with the 7/8" hardware.

(Figure 4).

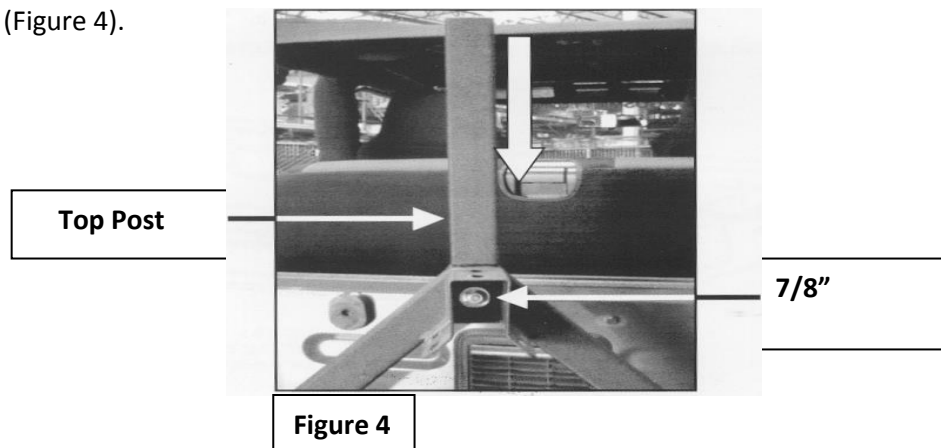


Figure 4

10. Locate tire mounting bracket, (3) 3/8 x 1" Hex Head Bolts, (6) 3/8" Flat Washers, (3) Lock Nuts. Slide the tire mounting bracket over support bracket on carrier. Lineup the 3 slotted holes and install with the 3/8" hardware. (Figure 5,6) **Note:** There are two sets of slotted holes. This is to accommodate oversize tires. Determine the best position for your tire size and then tighten all hardware on mounting bracket. For best results the back side of the tire should rest against the (Triangle) tire carrier.

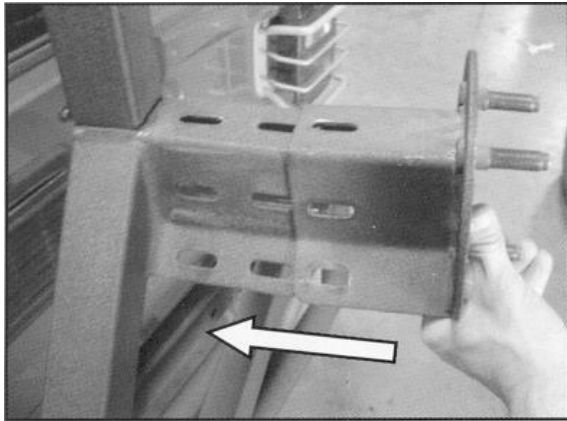


Figure 5

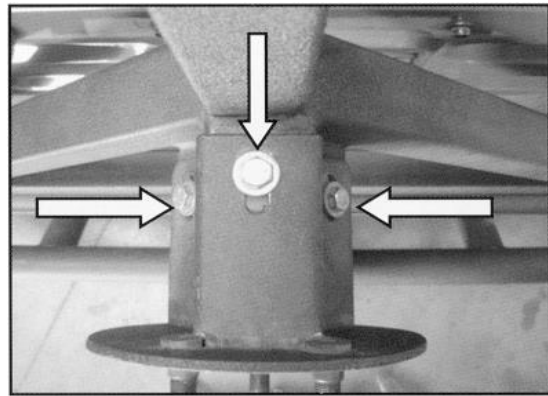


Figure 6

11. It may be necessary to install the supplied rubber bushing/spacer on the backside of the (Triangle) tire carrier. This will help reduce any rattling that may occur. Determine the best mounting spot on the backside of the carrier where it will rest flush on the back of the vehicle and not interfere with anything. Mount by drilling a 1/8" hole and the supplied #10 x 1" sheet metal screw.

PRODUCT CARE

- Periodically check the product to ensure all fasteners are tight and components are intact.
- Regular waxing is recommended to protect the finish of the product.
- **Use ONLY Non-Abrasive automotive wax.** Use of any soap, polish or wax that contains an abrasive is detrimental and can scratch the finish leading to corrosion.
- Aluminum polish may be used to polish small scratches and scuffs for **Stainless Steel finish.**
- Mild soap may be used to clean the product for both **Stainless Steel and Black finish.**

FAQ's**1. Hardware's are not of correct size.**

In GMC / Chevrolet truck model 2006 & up, customer needs to reuse the factory body bolts to install the bracket. If your vehicle is not GMC / Chevrolet 2006 & up, ensure that holes are not partially covered with any plastic grommet or rust? If it is, remove the plastic grommet & rust from the thread holes & re-try the installation.

2. Mounting Bracket are not getting Installed properly.

In some cases Illustration images shown in Installation manual may not be the exactly same as per actual vehicle images ,also if Driver / Passenger side mounting brackets are very identical in the design, suggest referring Parts Identification guide to avoid fitment issue.

3. Products are thumping / rattling after installation.

Ensure that all required mounting brackets / hardware's are installed & tighten correctly. Suggest using white lithium / regular grease between the metal to metal contact surfaces.

4. Side Bar is not aligning with vehicle / Step Pads are not aligning with vehicle doors.

Side bar may be interchanged or mounting brackets are not installed at the correct position in the vehicle. Refer Parts identification guide.

5. Missing / Excess Hardware.

Recheck hardware count as per the part list.

6. Product not installing properly.

Ensure make model year, cab length and bed size of your vehicle is listed in the application. All installation steps are followed correctly.

Check out these other TrailFX Products!!

www.TrailFX.com



SIDE BAR



HEADACHE RACKS



RUNNING BOARDS



ROCKER GUARDS

Keystone Automotive Operations Inc. (KAO) warrants this product to be free of defects in material and workmanship at the time of purchase by the original retail consumer. KAO disclaims any other warranties, express or implied, including the warranty of fitness for a particular purpose or an intended use. If the product is found to be defective, KAO may replace or repair the product at our option, when the product is returned prepaid, with proof of purchase. Alteration to, improper installation, or misuse of this product voids the warranty. KAO's liability is limited to repair or replacement of products found to be defective, and specifically excludes liability for any incidental or consequential loss or damage.