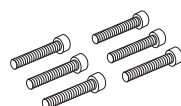


INSTALLATION SHEET-Ford Flareside '92-96

CLASSIC
**PLATINUM &
BLACKMAX™**

extang
AMERICA'S BEST
SELLING TONNEAUS

**NEW Improved
"DOUBLE HOOK"
Side Rail Clamps**



Clamp Bolts

Allen Wrench

MISSING PARTS???

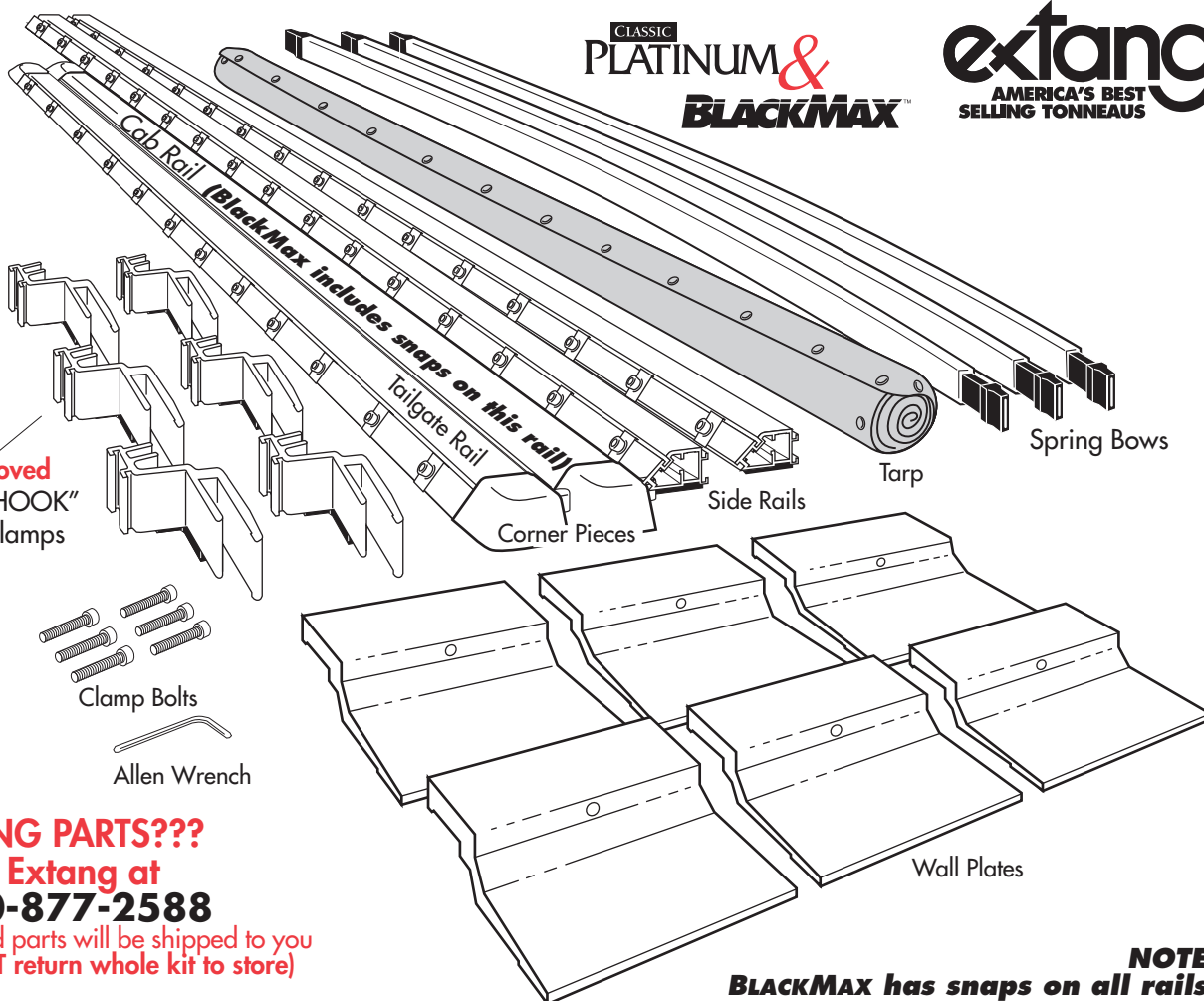
call Extang at

1-800-877-2588

Any and all needed parts will be shipped to you directly. (DO NOT return whole kit to store)

PARTS INCLUDED IN YOUR KIT. You may want to lay them out in this manner for accessibility.

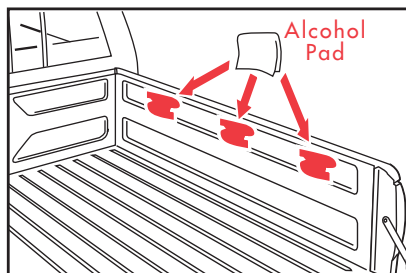
NOTE:
BLACKMAX has snaps on all rails.



1



Wash truck bed.



IMPORTANT: Clean here with alcohol pad.
(Both Sides)

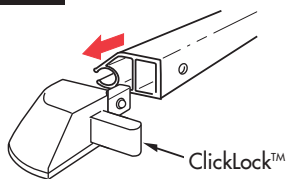
2



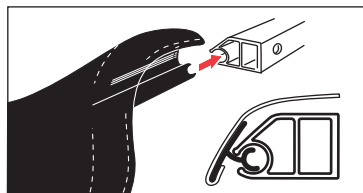
Remove paper tape from all rails. Discard properly.

3

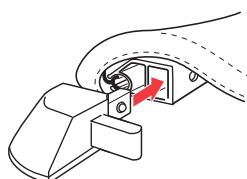
For Classic Platinum Only (This step does not apply to BlackMax)



Pull back on the ClickLock™ release and remove one corner from cab rail.

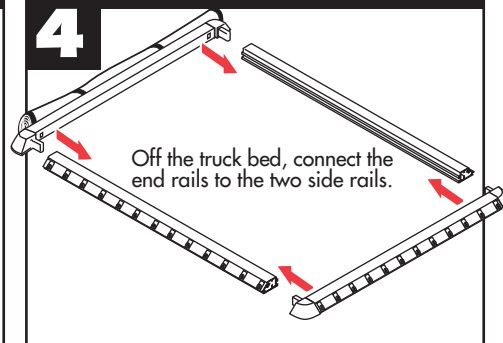


Feed tarp dowel into cab rail.
(NOTE: For easiest feeding action, place tarp on a flat smooth surface, and keep dowel straight while feeding into cab rail. Caution, pavement may scuff tarp.)

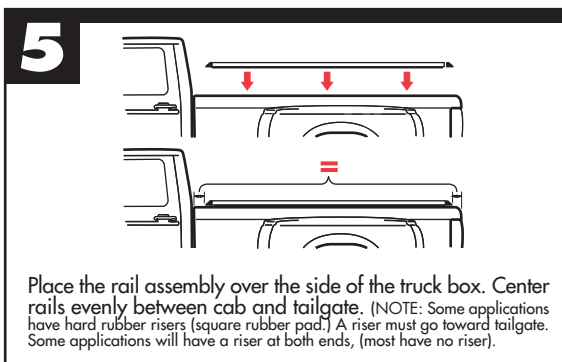


Reinsert corner piece into cab rail until it "clicks" and locks into place.

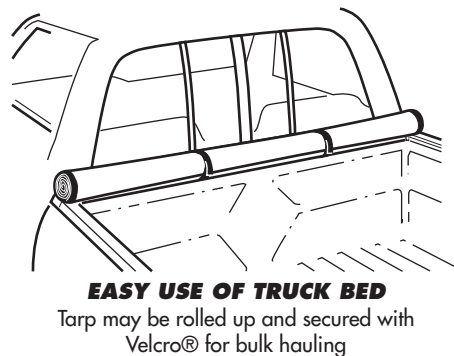
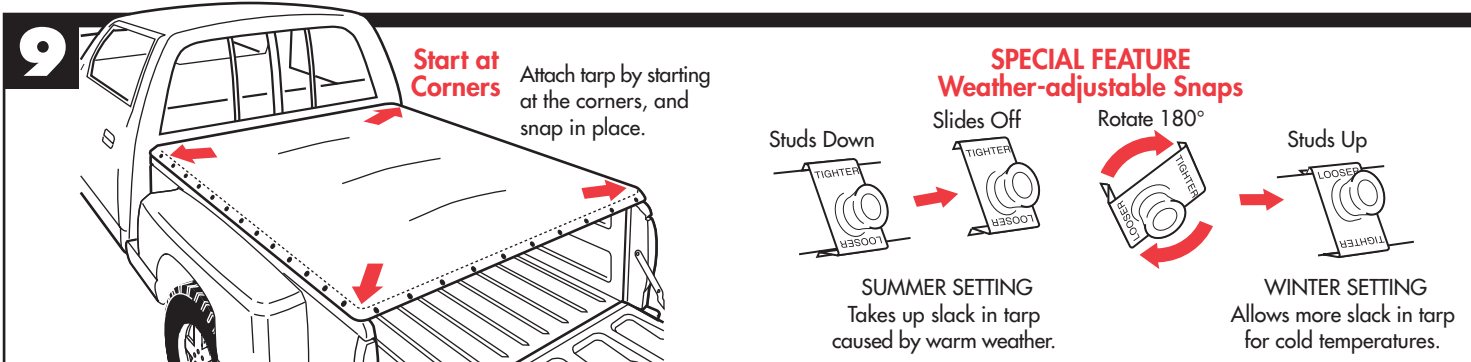
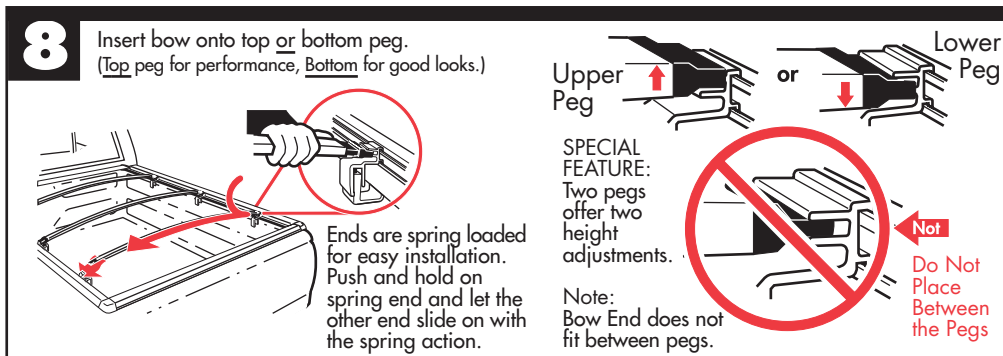
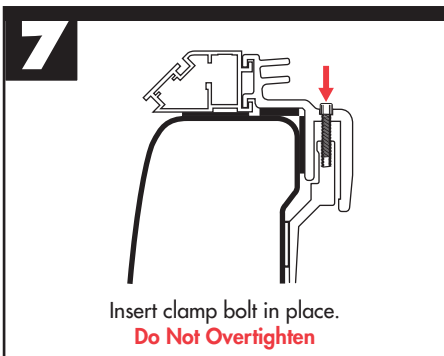
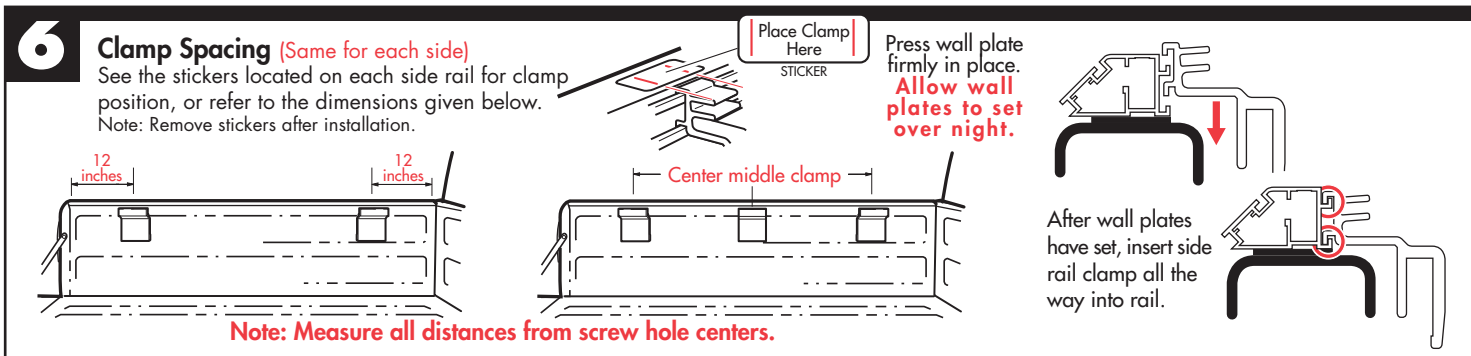
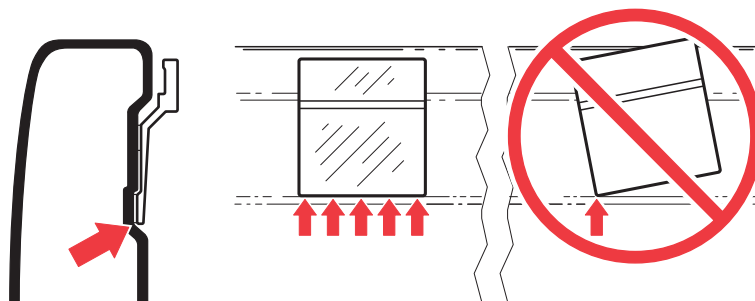
4



Off the truck bed, connect the end rails to the two side rails.



When positioning wall plates be sure that they fit correctly against the truck bed wall.
The plates must seat against the bottom of, and parallel to, the wall indentation.



To Keep Your **CLASSIC** **PLATINUM & BLACKMAX™**

tonno looking great! Clean with Mild Soap and Water ONLY
 or
 Use EXTANG's **TONNO TONIC™**—specially formulated for vinyl tonno covers. It cleans, protects, and beautifies in a simple one-step application.

Use of vinyl conditioners (such as Armor All) will void your tonno warranty!

