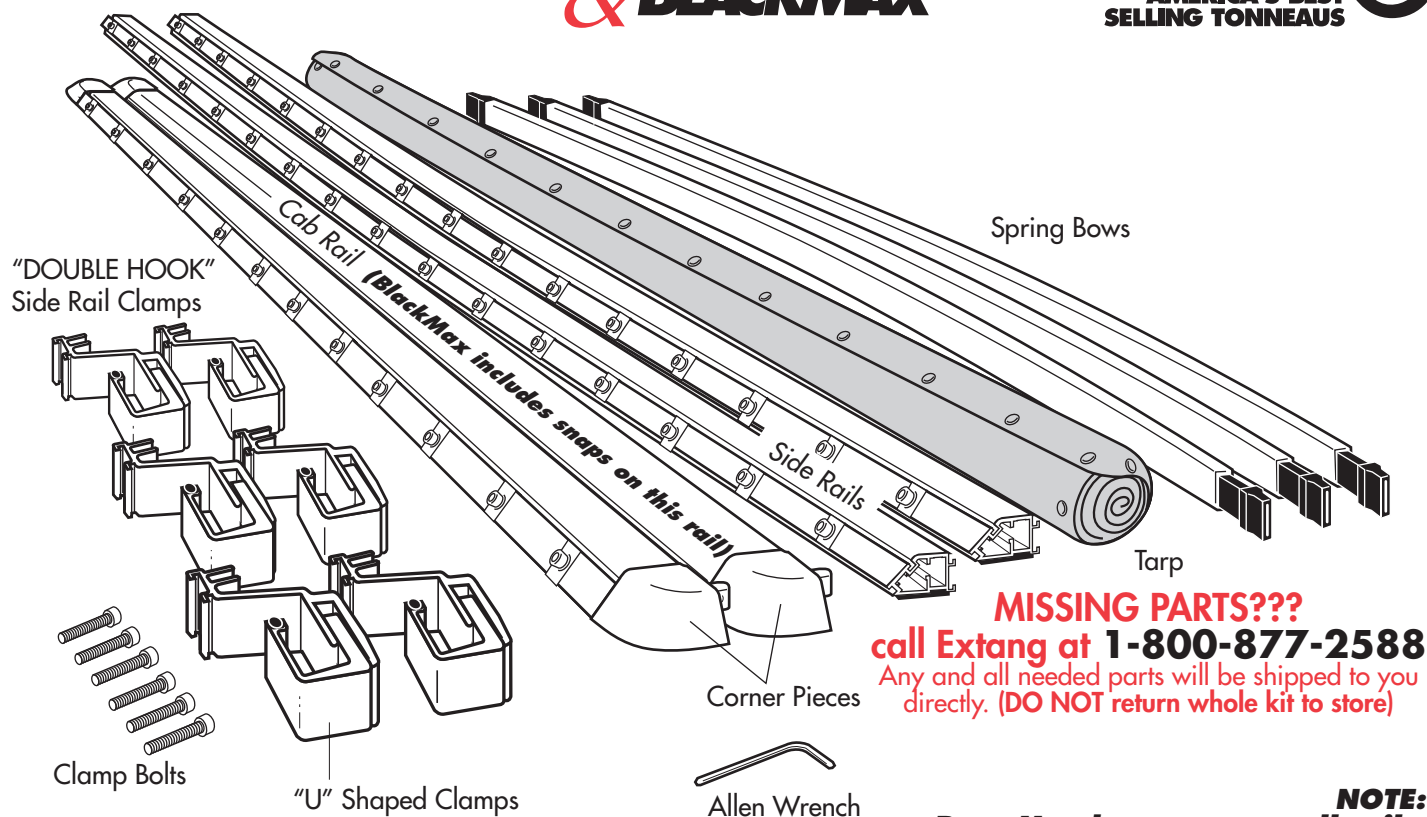


INSTALLATION SHEET-Ford Flareside '97-

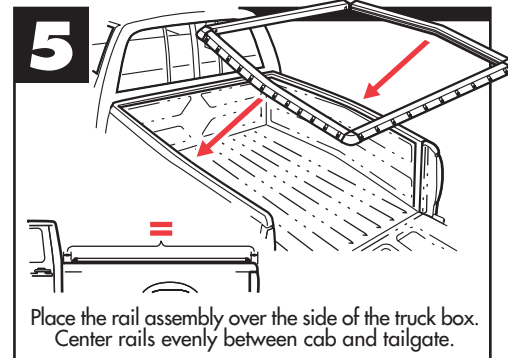
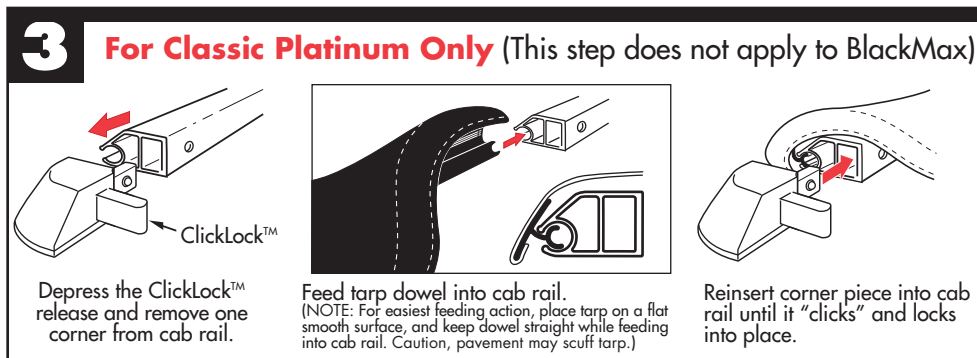
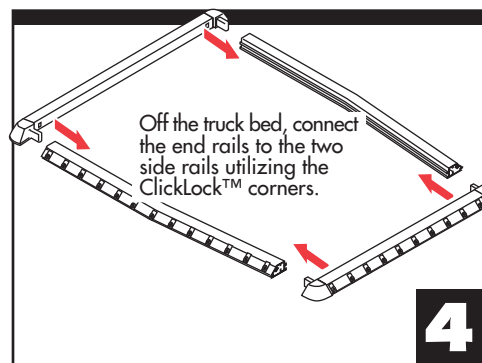
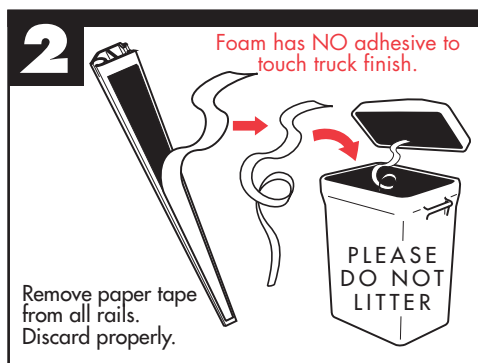
Part Nos. 7615, 2615

CLASSIC
PLATINUM & BLACKMAX™

extang
AMERICA'S BEST
SELLING TONNEAUS



PARTS INCLUDED IN YOUR KIT. You may want to lay them out in this manner for accessibility.



Extang Corporation
1901 E. Ellsworth Rd.
Ann Arbor, MI 48108
734 677-0444, Fax: 734 677-8409

Register your warranty at:
www.extang.com
Item No. 0015-0708 RH Printed in U.S.A.

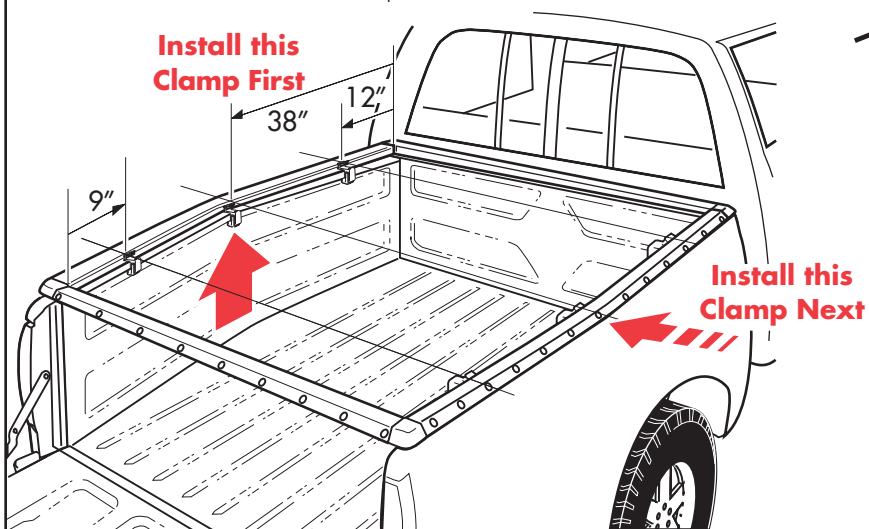
6

Side Rail Clamp Spacing (Same for each side)

See the stickers located on each side rail for clamp position, or refer to the dimensions given below.

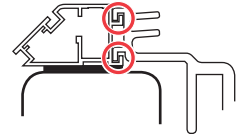
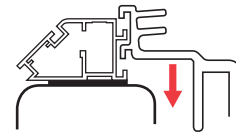
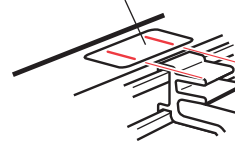
Note: Remove stickers after installation.

Install one middle clamp first and then install the opposite middle clamp next. Note: You will need to push the frame assembly in slightly to install the second middle clamp.

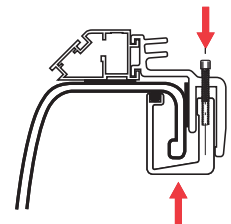


Insert side rail clamp all the way into rail.

Place Clamp Here
STICKER



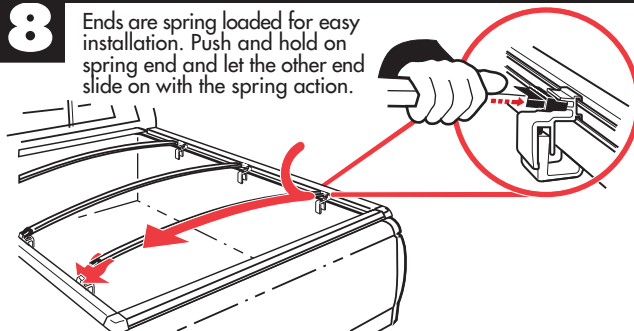
7



Attach "U" clamp to side rail clamp with allen bolt. Insert side rail clamp all the way into rail.

8

Ends are spring loaded for easy installation. Push and hold on spring end and let the other end slide on with the spring action.



Insert bow onto top or bottom peg.
(Top peg for performance,
Bottom for good looks.)

SPECIAL FEATURE: Two pegs offer two height adjustments.

Note:
Bow End does not fit between pegs.

Upper Peg



or



Lower Peg

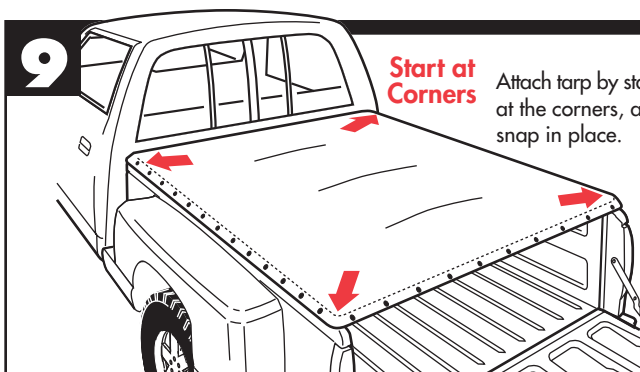


Do Not Place Between the Pegs

9

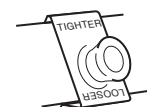
Start at Corners

Attach tarp by starting at the corners, and snap in place.



SPECIAL FEATURE Weather-adjustable Snaps

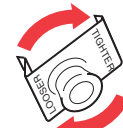
Studs Down



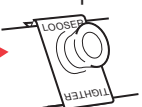
Slides Off



Rotate 180°



Studs Up



SUMMER SETTING

Takes up slack in tarp caused by warm weather.

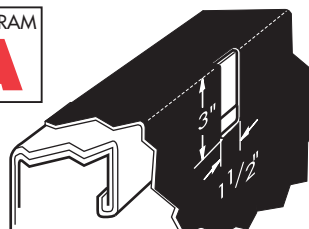
WINTER SETTING

Allows more slack in tarp for cold temperatures.

For an OVER-THE-RAIL Bedliner

DIAGRAM

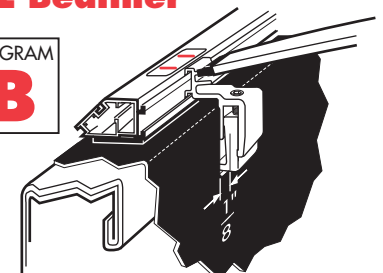
A



For each clamp mark on your bedliner a 1-1/2" x 3" hole as shown above. Remove clamp. Cut holes in bedliner. Reinsert side rail clamp. Return to step 6.

DIAGRAM

B



Side rail clamped to bed with bow attached.

EASY USE OF TRUCK BED

Tarp may be rolled up and secured with Velcro® for bulk hauling

extang

Extang Corporation, 1901 E. Ellsworth Rd., Ann Arbor, MI 48108, 734 677-0444, Fax: 734 677-8409, Visit us at: www.extang.com