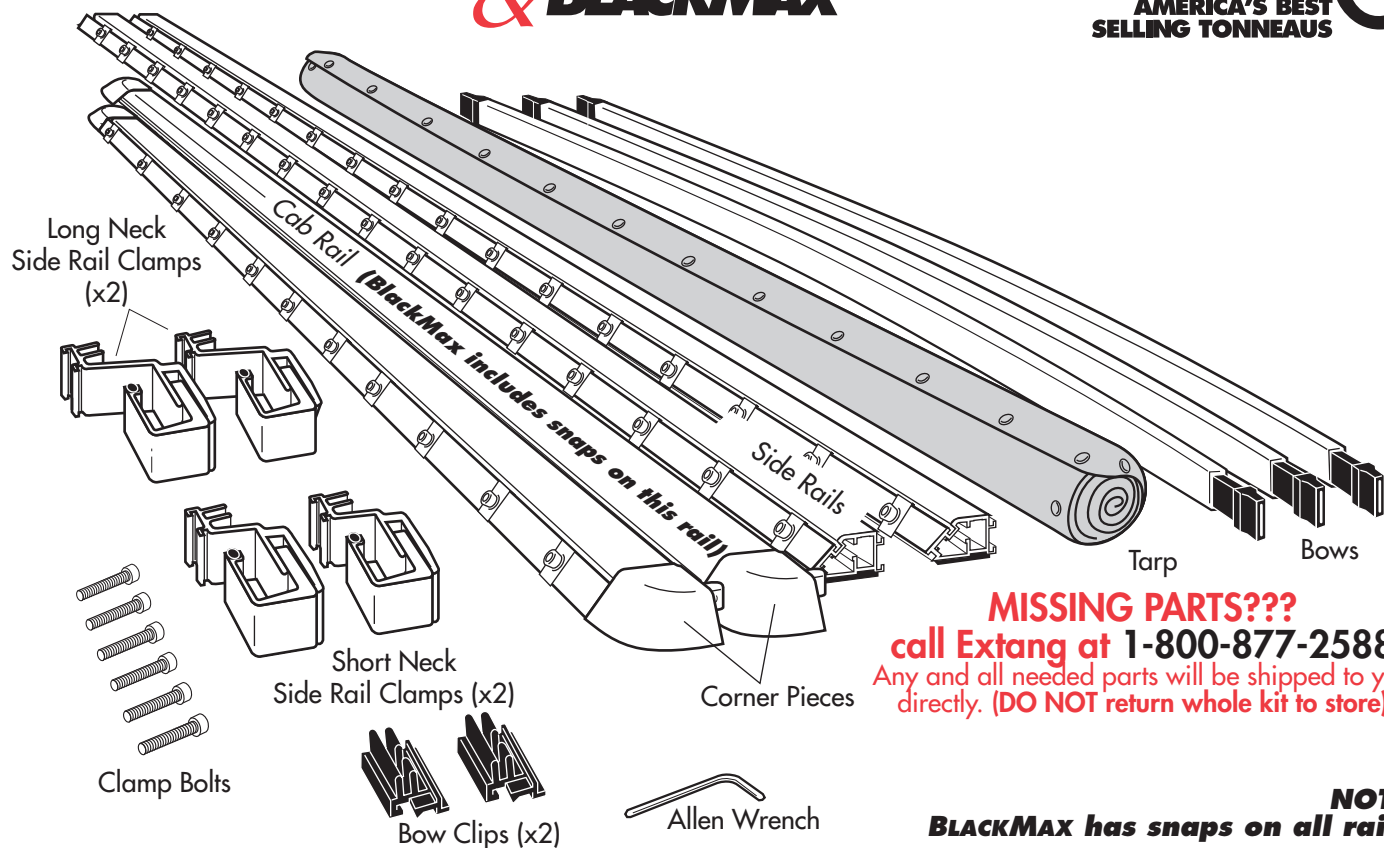


INSTALLATION SHEET - F150 Super Crew

CLASSIC
PLATINUM & BLACKMAX™

extang
AMERICA'S BEST
SELLING TONNEAUS



PARTS INCLUDED IN YOUR KIT. You may want to lay them out in this manner for accessibility.

1



Wash truck bed.

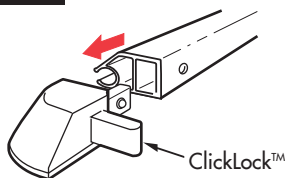
2



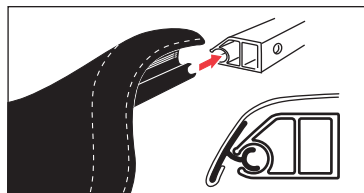
Remove paper tape from all rails. Discard properly.

3

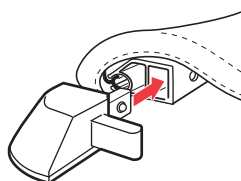
For Classic Platinum Only (This step does not apply to BlackMax)



Pull back on the ClickLock™ release and remove one corner from cab rail.

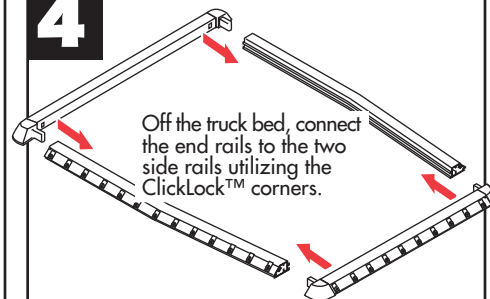


Feed tarp dowel into cab rail.
(NOTE: For easiest feeding action, place tarp on a flat smooth surface, and keep dowel straight while feeding into cab rail. Caution, pavement may scuff tarp.)



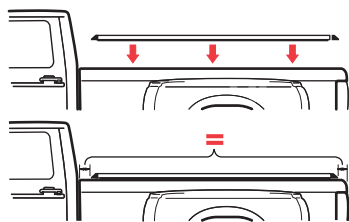
Reinsert corner piece into cab rail until it "clicks" and locks into place.

4



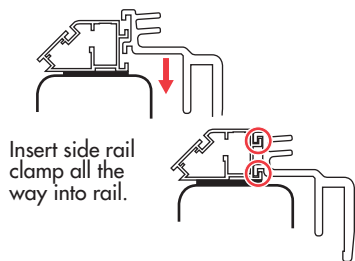
Off the truck bed, connect the end rails to the two side rails utilizing the ClickLock™ corners.

5



Place the rail assembly over the side of the truck box. Center rails evenly between cab and tailgate. (NOTE: Some applications have hard rubber risers (square rubber pad.) A riser must go toward tailgate. Some applications will have a riser at both ends, (most have no riser).

Note: For over-the-rail bed liners first refer to Diagrams A and B below.

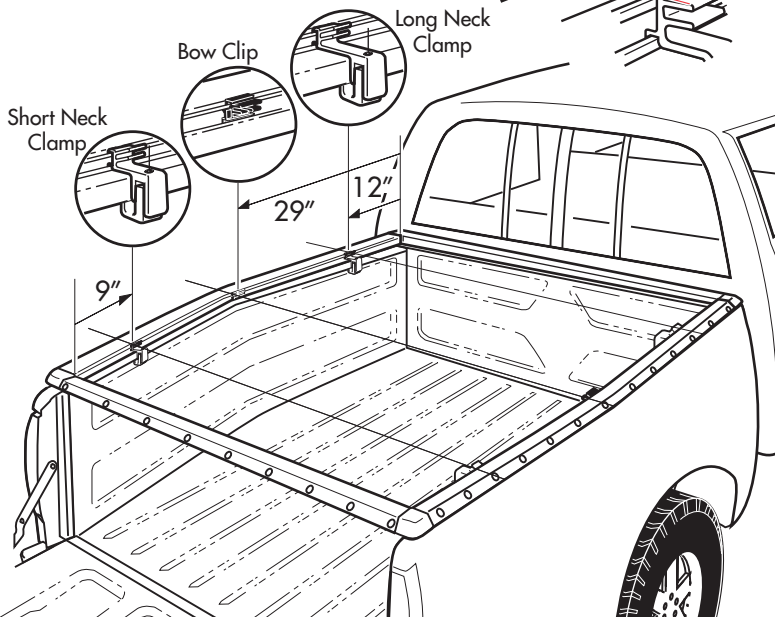


6

Side Rail Clamp Spacing (Same for each side)

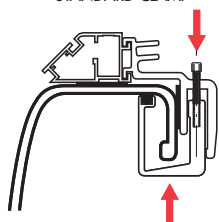
See the stickers located on each side rail for clamp position, or refer to the dimensions given below.

Note: Remove stickers after installation.



7

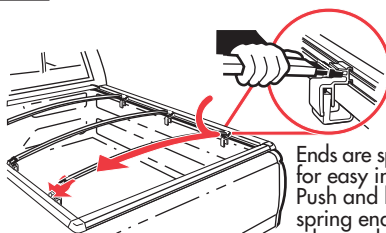
STANDARD CLAMP



Attach "U" clamp to side rail clamp with allen bolt. Insert side rail clamp all the way into rail.

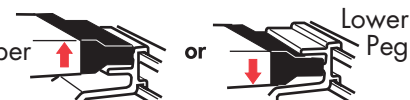
8

Insert bow onto top or bottom peg.
(Top peg for performance, Bottom for good looks.)



Ends are spring loaded for easy installation. Push and hold on spring end and let the other end slide on with the spring action.

Upper Peg



SPECIAL FEATURE:
Two pegs offer two height adjustments.

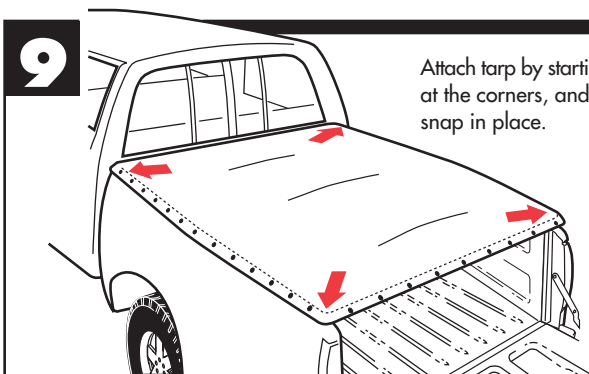


Do Not Place Between the Pegs

Note:
Bow End does not fit between pegs.

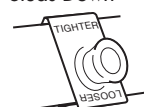
9

Attach tarp by starting at the corners, and snap in place.



SPECIAL FEATURE Weather-adjustable Snaps

Studs Down



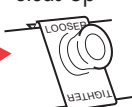
Slides Off



Rotate 180°



Studs Up

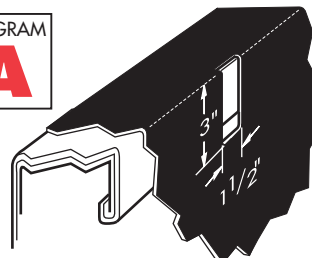


SUMMER SETTING
Takes up slack in tarp caused by warm weather.

WINTER SETTING
Allows more slack in tarp for cold temperatures.

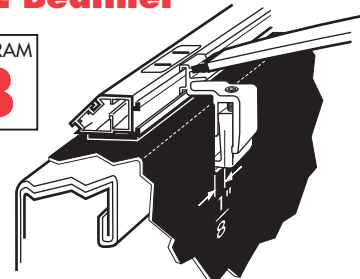
For an OVER-THE-RAIL Bedliner

DIAGRAM
A



For each clamp mark on your bedliner a 1-1/2" x 3" hole as shown above. Remove clamp. Cut holes in bedliner. Reinsert side rail clamp. Return to step 6.

DIAGRAM
B



Side rail clamped to bed with bow attached.

EASY USE OF TRUCK BED

Tarp may be rolled up and secured with Velcro® for bulk hauling